

120mA 2ch LDO REGULATORS

NO.EA-077-111027

OUTLINE

The R5322N Series are voltage regulator ICs with high output voltage accuracy, low supply current, low dropout, and high ripple rejection by CMOS process. Each of these voltage regulator ICs consists of a voltage reference unit, an error amplifier, resistors for setting Output Voltage, a current limit circuit, and a chip enable circuit.

These ICs perform with low dropout voltage due to built-in transistor with low ON resistance, and a chip enable function and prolong the battery life of each system. The line transient response and load transient response of the R5322N Series are excellent, thus these ICs are very suitable for the power supply for hand-held communication equipment.

The output voltage of these ICs is internally fixed with high accuracy. Since the package for these ICs is SOT-23-6W package, and include 2ch LDO regulators each, high density mounting of the ICs on boards is possible.

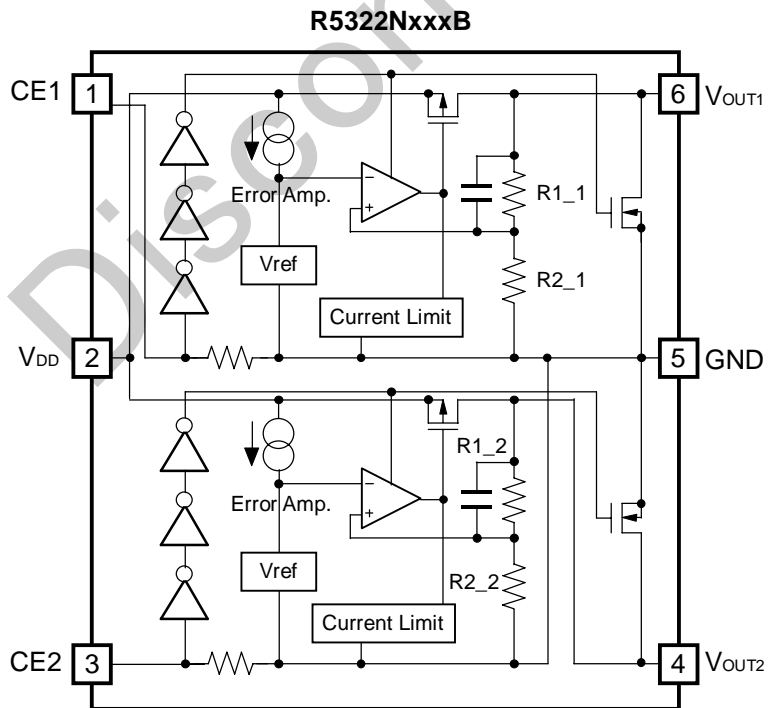
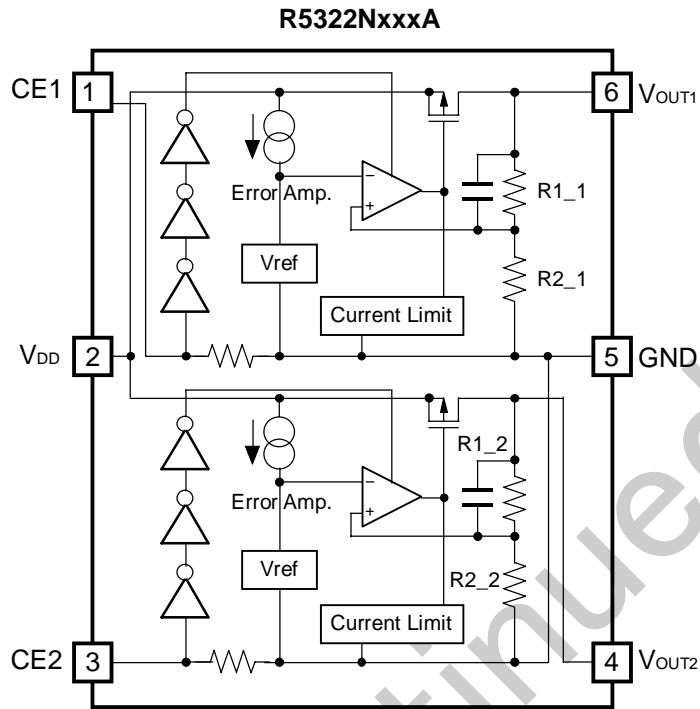
FEATURES

- Ultra-Low Supply Current..... Typ. 75 μ A (VR1, VR2)
- Standby Current Typ. 0.1 μ A (VR1, VR2)
- Output Voltage 1.5V to 4.0V
- Low Dropout Voltage..... Typ. 0.15V ($I_{OUT}=100\text{mA}$, $V_{OUT}=3.0\text{V}$)
- High Ripple Rejection Typ. 75dB ($f=1\text{kHz}$)
- High Output Voltage Accuracy $\pm 2.0\%$
- Low Temperature-Drift Coefficient of Output Voltage.... Typ. $\pm 100\text{ppm}/^\circ\text{C}$
- Excellent Line Regulation Typ. 0.05%/V
- Small Packages SOT-23-6W
- Built-in chip enable circuit (A/B: active high)
- Built-in fold-back protection circuit..... Typ. 40mA (Current at short mode)

APPLICATIONS

- Power source for cellular phones such as GSM, CDMA and various kinds of PCS.
- Power source for electrical appliances such as cameras, VCRs and camcorders.
- Power source for battery-powered equipment.

BLOCK DIAGRAMS



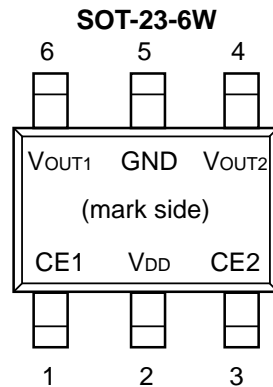
SELECTION GUIDE

The output voltage, mask option, and the taping type for the ICs can be selected at the user's request.
The selection can be made with designating the part number as shown below;

R5322Nxxxx-xx-x ← Part Number
 ↑ ↑ ↑ ↑
 a b c d

Code	Contents
a	Setting combination of 2ch Output Voltage (V_{OUT}) : Serial Number for Voltage Setting, Stepwise setting with a step of 0.1V in the range of 1.5V to 4.0V is possible for each channel.
b	Designation of Mask Option : A Version: without auto discharge function at OFF state. B Version: with auto discharge function at OFF state.
c	Designation of Taping Type : Ex. TR (refer to Taping Specifications; TR type is the standard direction.)
d	Designation of Composition of pin plating. -F : Lead free plating

PIN CONFIGURATION



PIN DESCRIPTIONS

- SOT-23-6W

Pin No	Symbol	Pin Description
1	CE1	Chip Enable Pin 1
2	V _{DD}	Input Pin
3	CE2	Chip Enable Pin 2
4	V _{OUT2}	Output Pin 2
5	GND	Ground Pin
6	V _{OUT1}	Output Pin 1

ABSOLUTE MAXIMUM RATINGS

Symbol	Item	Rating	Unit
V _{IN}	Input Voltage	6.5	V
V _{CE}	Input Voltage (CE Pin)	-0.3 to V _{IN} + 0.3	V
V _{OUT}	Output Voltage	-0.3 to V _{IN} + 0.3	V
I _{OUT1}	Output Current 1	130	mA
I _{OUT2}	Output Current 2	130	mA
P _D	Power Dissipation (SOT-23-6W) ^{*Note1}	430	mW
T _{opt}	Operating Temperature Range	-40 to 85	°C
T _{stg}	Storage Temperature Range	-55 to 125	°C

Note1: For Power Dissipation please refer to PACKAGE INFORMATION to be described.

ELECTRICAL CHARACTERISTICS

• R5322NxxxA/B

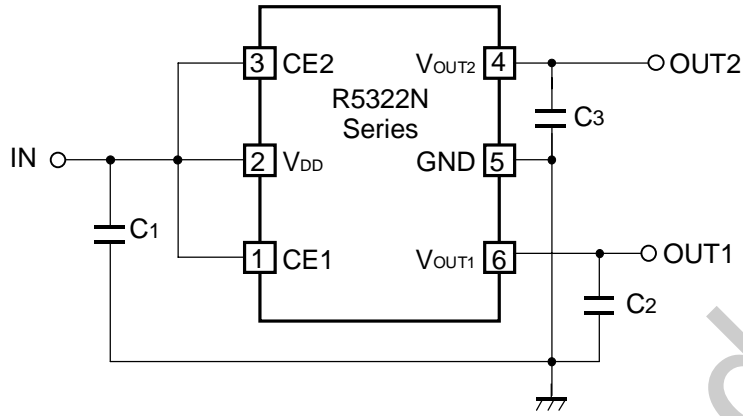
T_{opt}=25°C

Symbol	Item	Conditions	Min.	Typ.	Max.	Unit
V _{OUT}	Output voltage	V _{IN} =Set V _{OUT} +1V, 1mA ≤ I _{OUT} ≤ 30mA	×0.98		×1.02	V
I _{OUT}	Output Current	V _{IN} -V _{OUT} =1.0V	120			mA
ΔV _{OUT} /ΔI _{OUT}	Load regulation	V _{IN} =Set V _{OUT} +1V, 1mA ≤ I _{OUT} ≤ 120mA		12	40	mV
V _{DIF}	Dropout Voltage	Refer to the ELECTRICAL CHARACTERISTICS by OUTPUT VOLTAGE				
I _{SS}	Supply Current	V _{IN} =Set V _{OUT} +1V		75	150	μA
I _{standby}	Supply Current (Standby)	V _{IN} =V _{CE} =Set V _{OUT} +1V		0.1	1.0	μA
ΔV _{OUT} /ΔV _{IN}	Line regulation	Set V _{OUT} +0.5V ≤ V _{IN} ≤ 6.0V I _{OUT} =30mA (In case that V _{OUT} ≤ 1.6, 2.2V ≤ V _{IN} ≤ 6.0))		0.05	0.20	%/V
RR	Ripple Rejection	f=1kHz, Ripple 0.5Vp-p, V _{IN} =Set V _{OUT} +1V, I _{OUT} =30mA		75		dB
V _{IN}	Input Voltage		2.2		6.0	V
ΔV _{OUT} /ΔT _{opt}	Output Voltage Temperature Coefficient	I _{OUT} =30mA -40°C ≤ T _{opt} ≤ 85°C		±100		ppm /°C
I _{lim}	Short Current Limit	V _{OUT} =0V		40		mA
R _{PD}	CE Pull-down Resistance		1.5	4.0	16.0	MΩ
V _{CEH}	CE Input Voltage "H"		1.5		V _{IN}	V
V _{CEL}	CE Input Voltage "L"		0.0		0.3	V
e _n	Output Noise	BW=10Hz to 100kHz		30		μVrms
R _{LOW}	Low Output Nch Tr. ON Resistance (of B version)	V _{CE} =0V		70		Ω

• Electrical Characteristics by Output Voltage

Output Voltage V _{OUT} (V)	Dropout Voltage V _{DIF} (V)		
	Condition	Typ.	Max.
1.5V ≤ V _{OUT} < 1.6V	I _{OUT} = 120mA	0.36	0.70
1.7V ≤ V _{OUT} < 1.8V		0.30	0.50
1.9V ≤ V _{OUT} < 2.0V		0.28	0.45
2.1V ≤ V _{OUT} < 2.7V		0.24	0.40
2.8V ≤ V _{OUT} < 4.0V		0.18	0.30

TYPICAL APPLIATION



(External Components)
Output Capacitor; Tantalum Type

Discontinued

TEST CIRCUIT

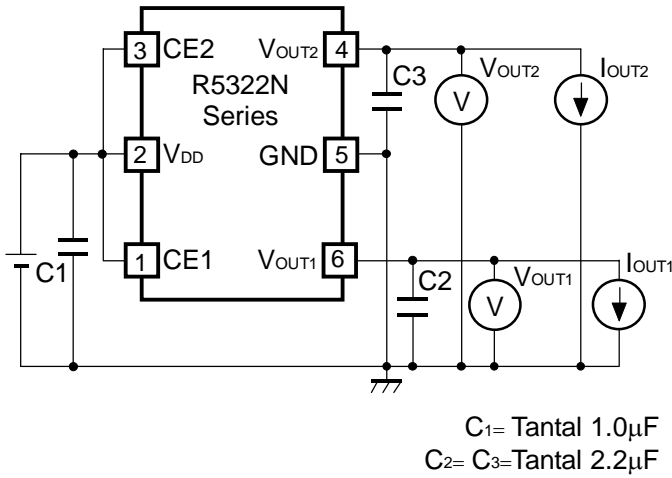


Fig.1 Standard test Circuit

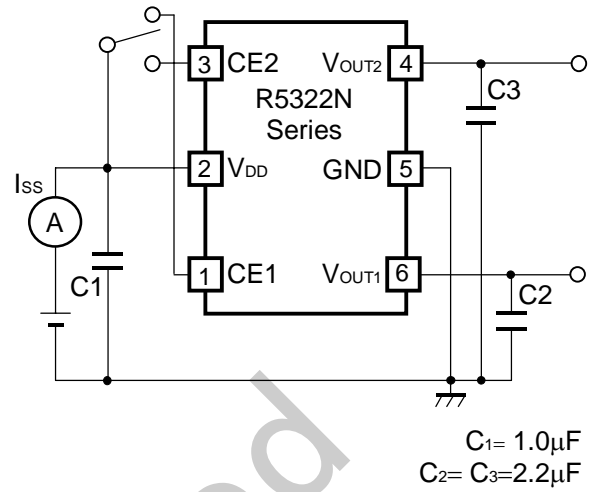


Fig.2 Supply Current Test Circuit

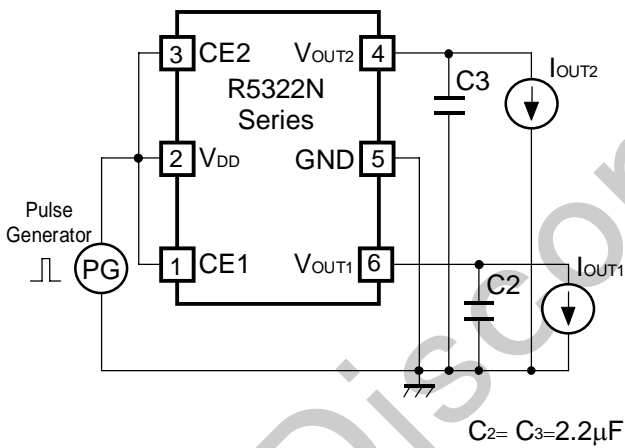


Fig.3 Ripple Rejection, Line Transient Response Test Circuit

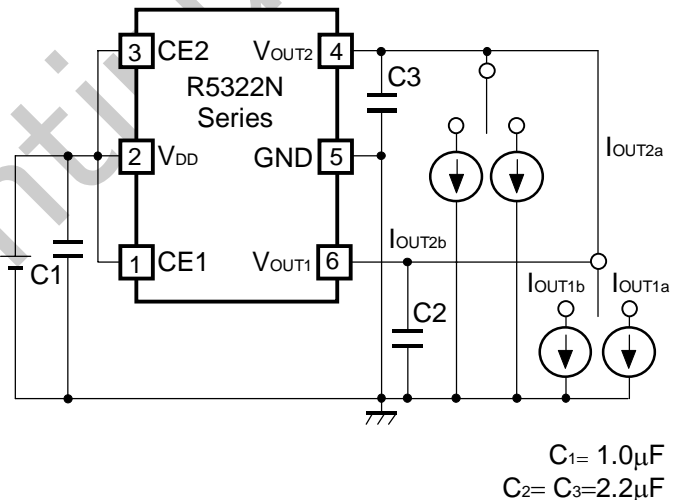
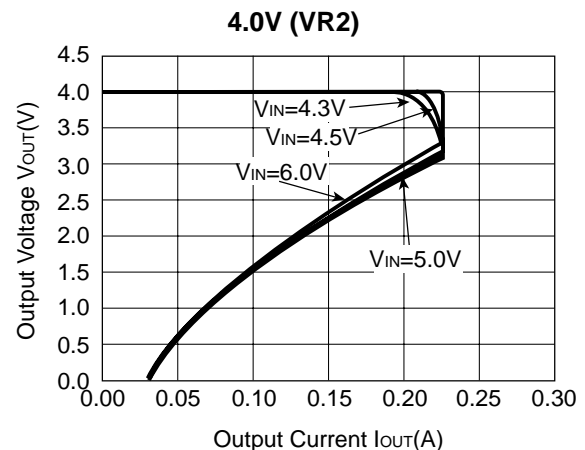
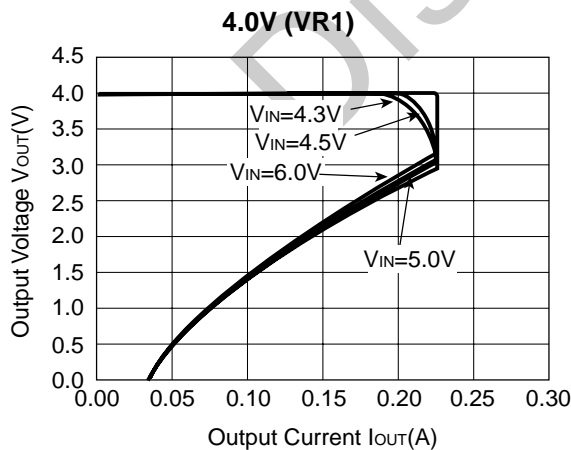
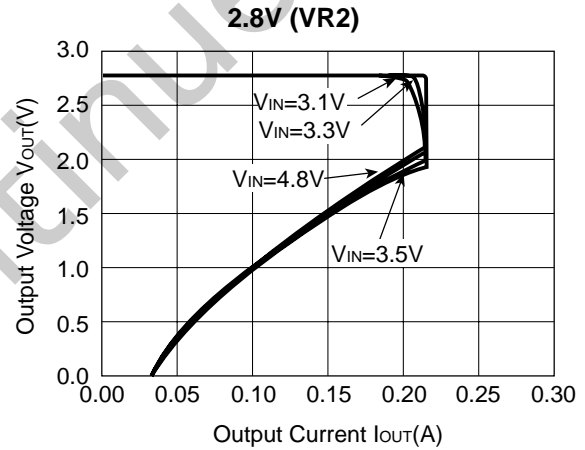
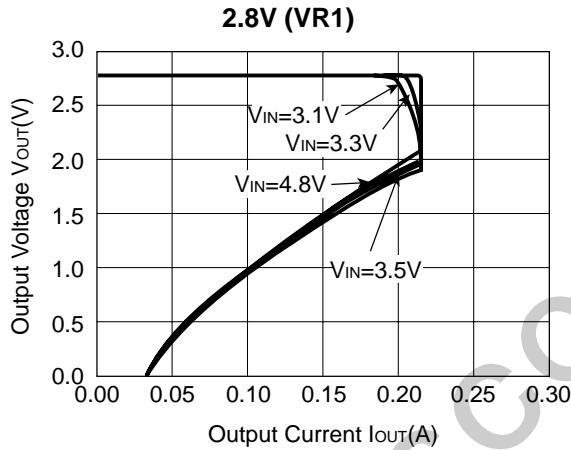
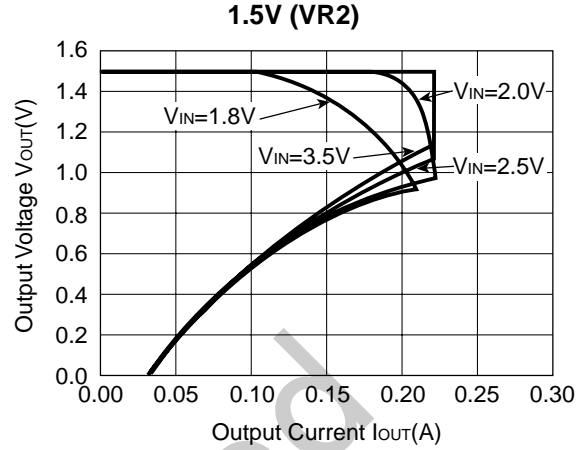
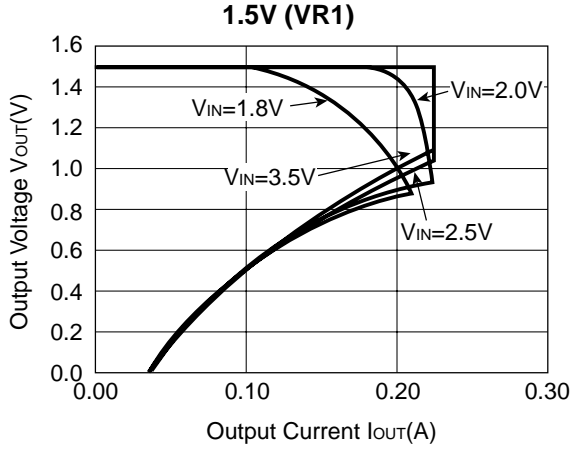


Fig.4 Load Transient Response Test Circuit

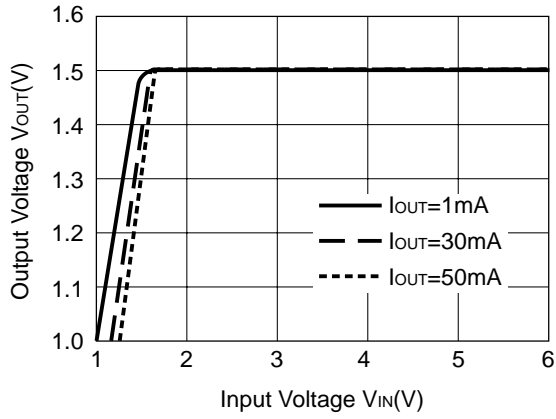
TYPICAL CHARACTERISTICS

1) Output Voltage vs. Output Current

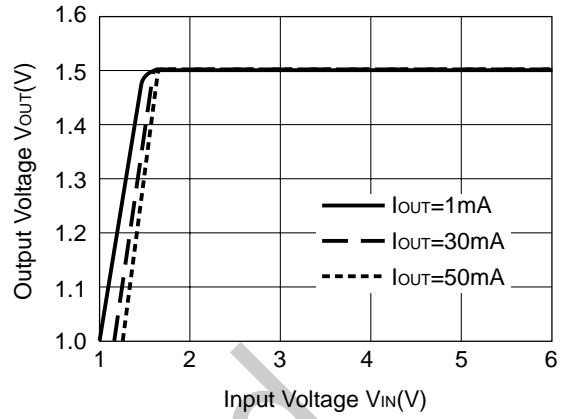


2) Output Voltage vs. Input Voltage

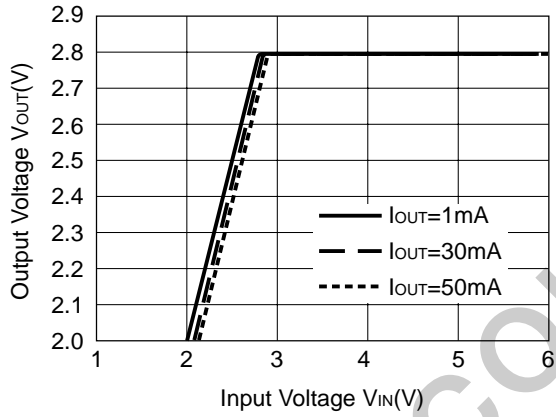
1.5V (VR1)



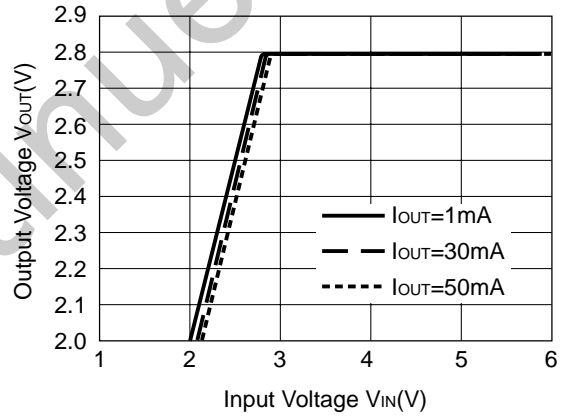
1.5V (VR2)



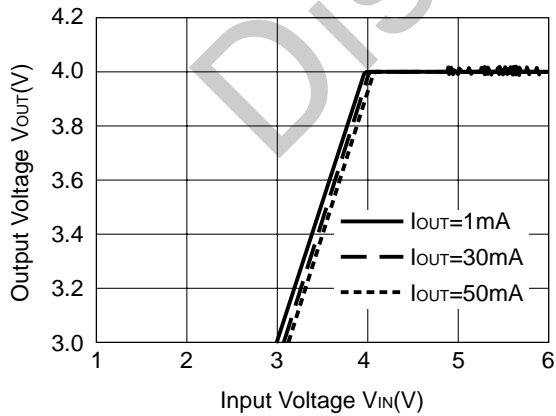
2.8V (VR1)



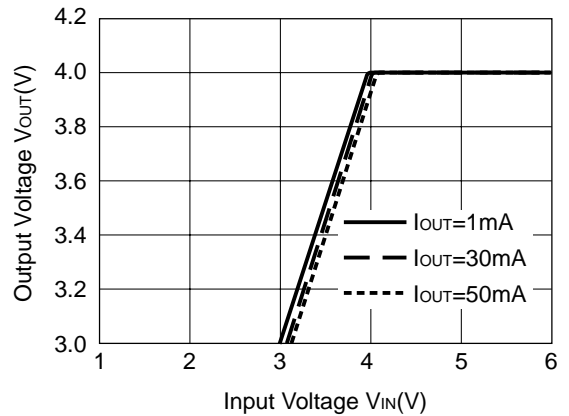
2.8V (VR2)



4.0V (VR1)

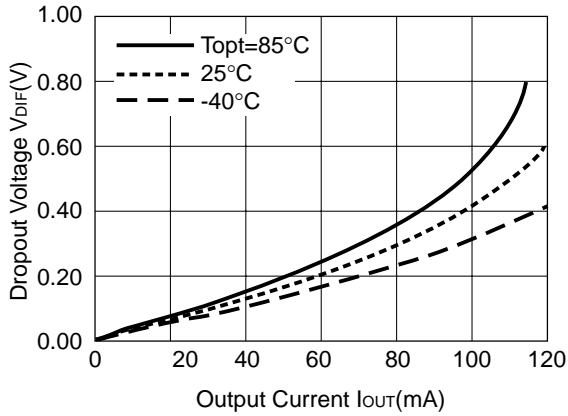


4.0V (VR2)

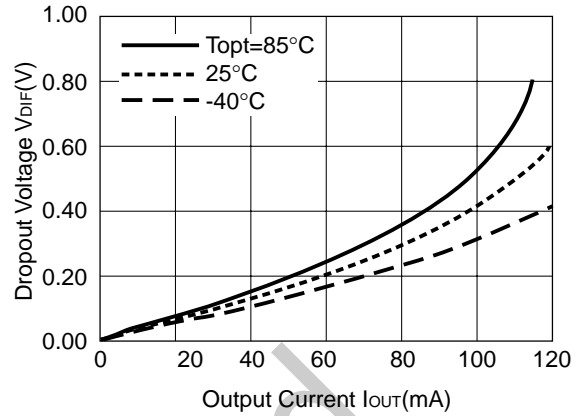


3) Dropout Voltage vs. Temperature

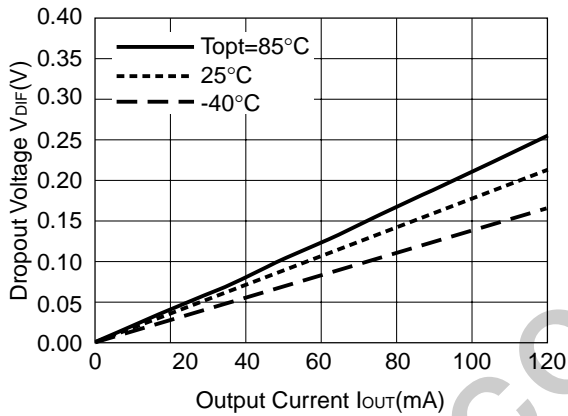
1.5V (VR1)



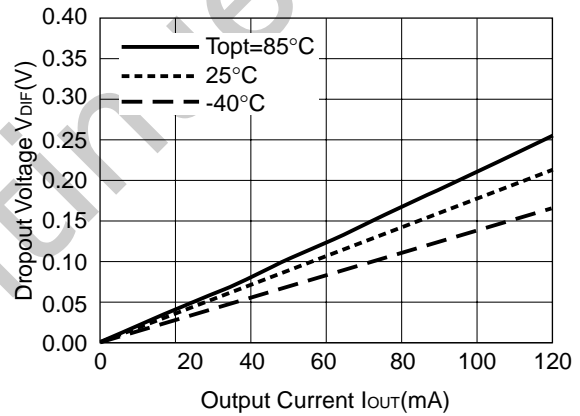
1.5V (VR2)



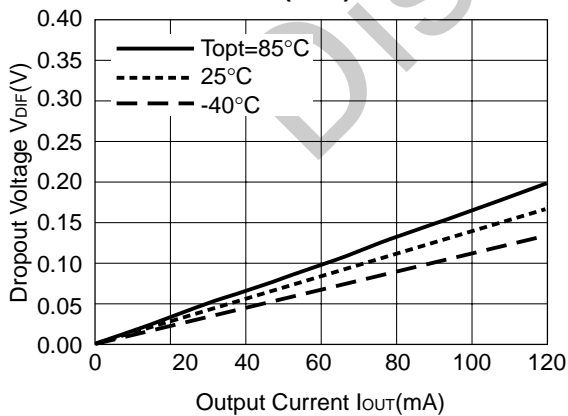
2.8V (VR1)



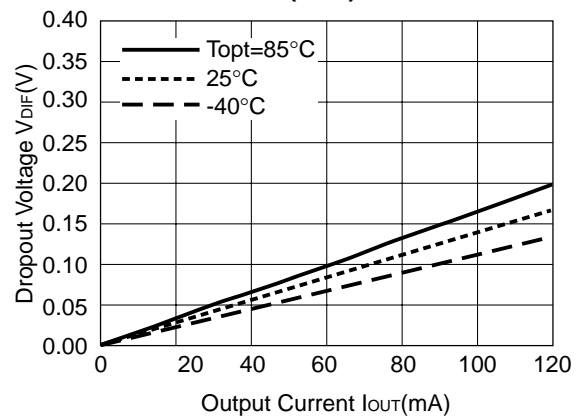
2.8V (VR2)



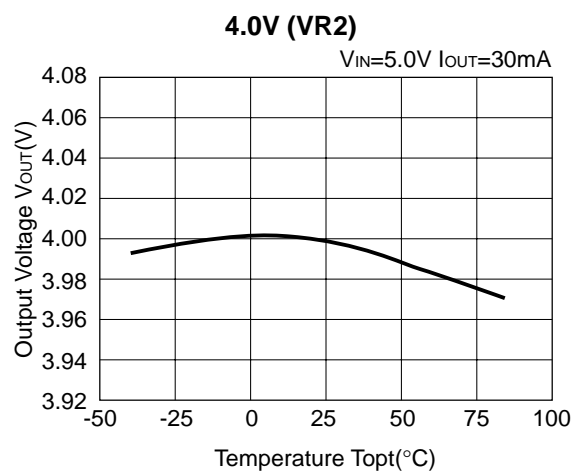
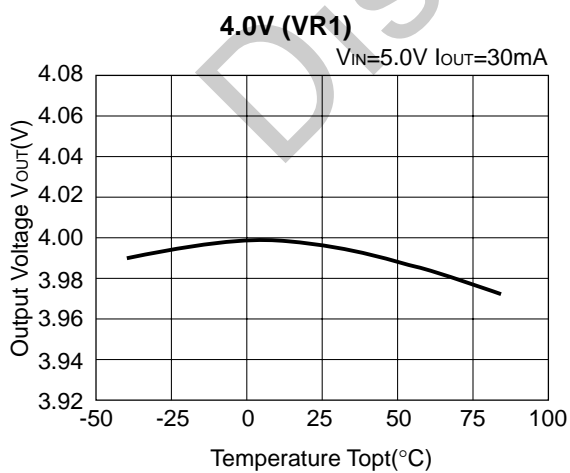
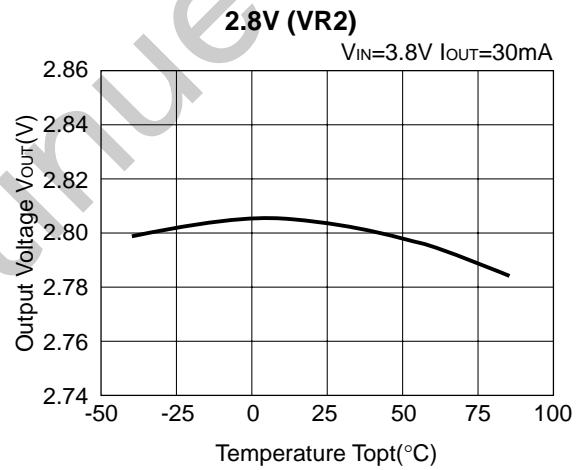
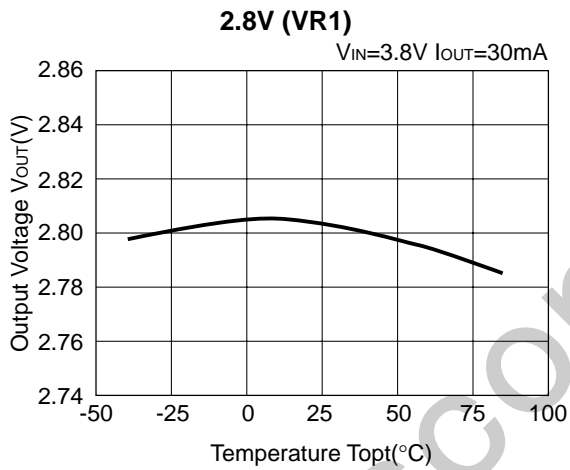
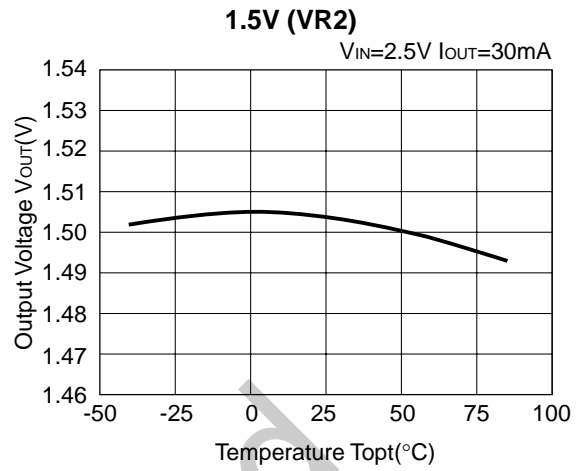
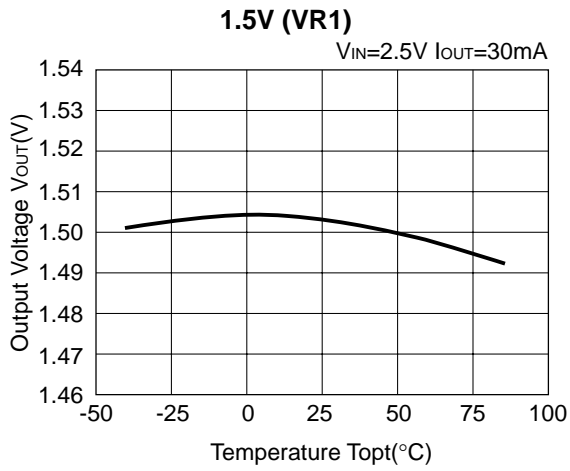
4.0V (VR1)



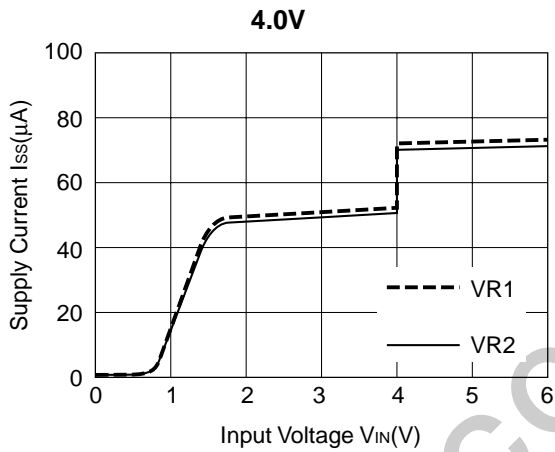
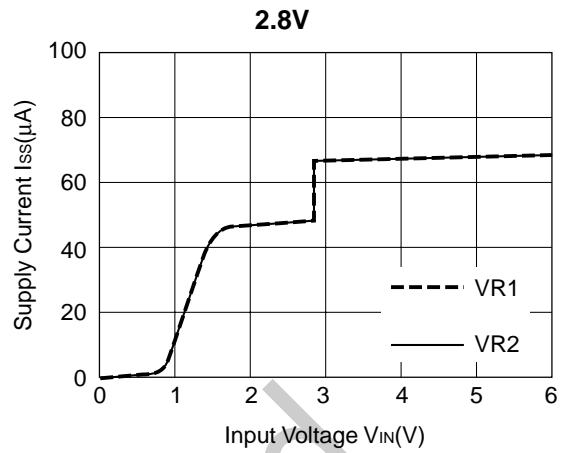
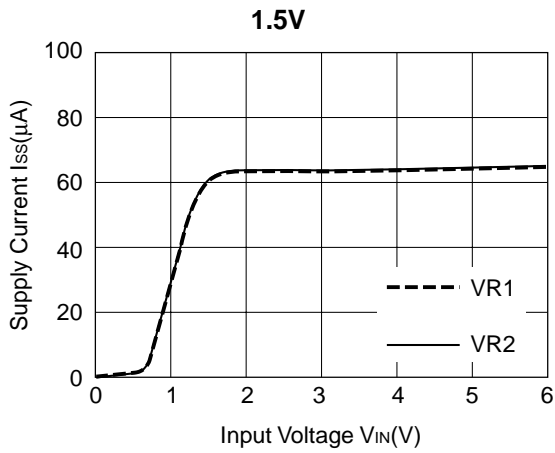
4.0V (VR2)



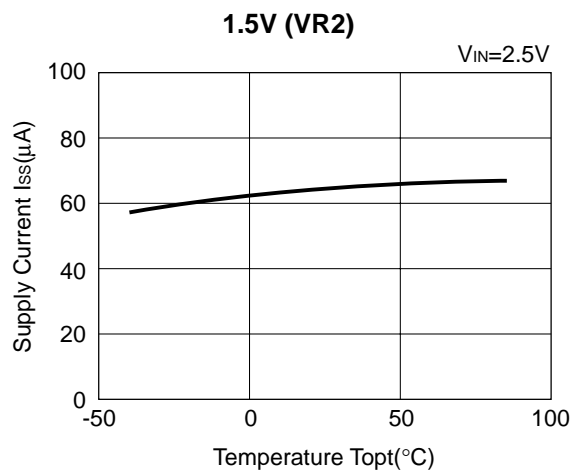
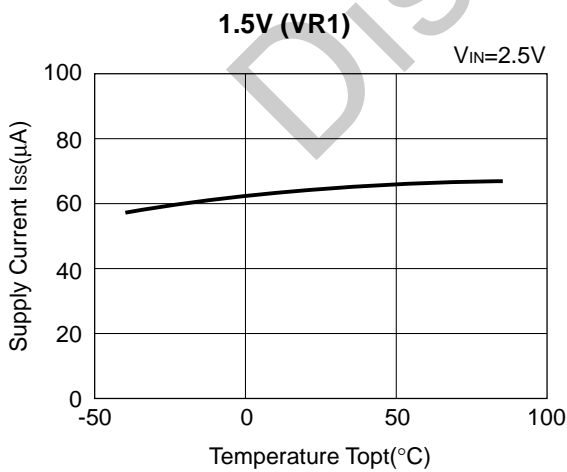
4) Output Voltage vs. Temperature

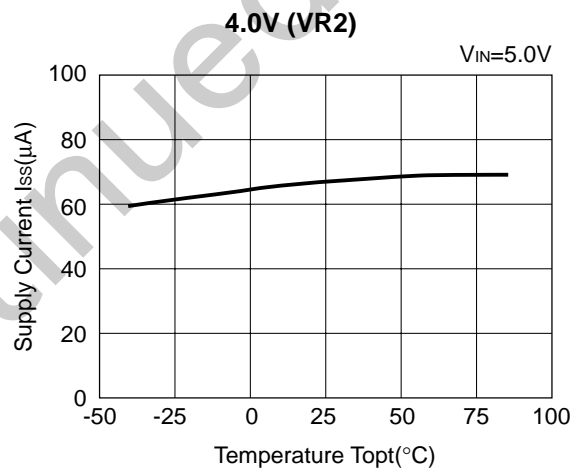
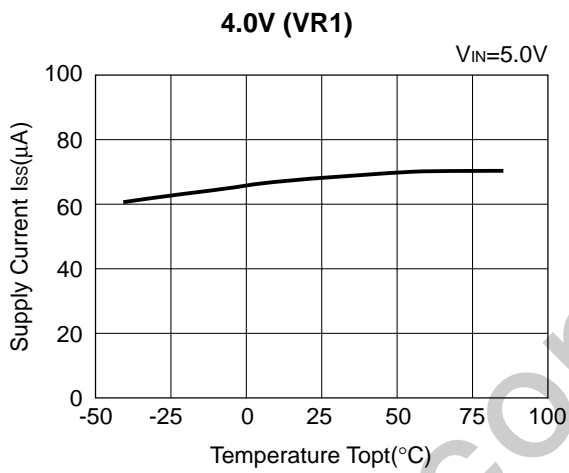
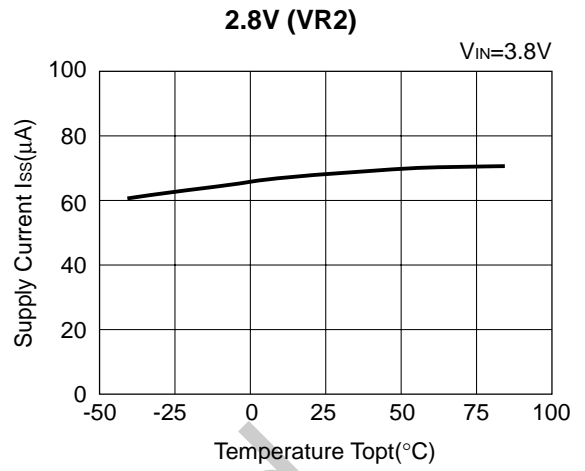
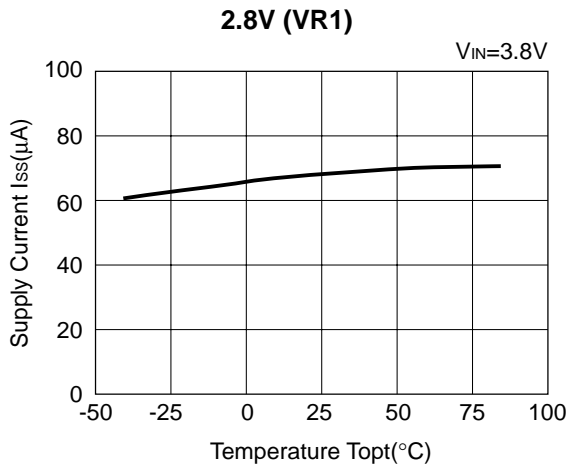


5) Supply Current vs. Input Voltage

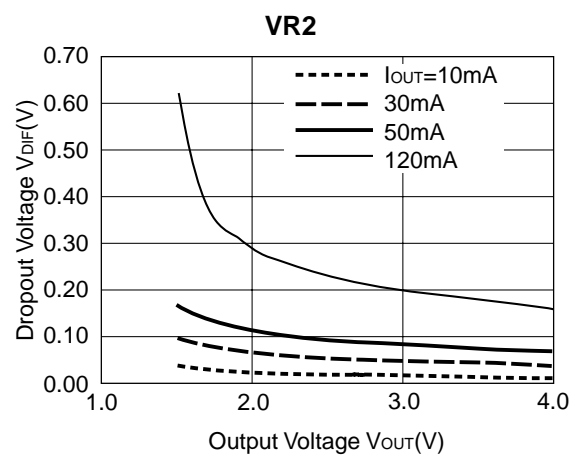
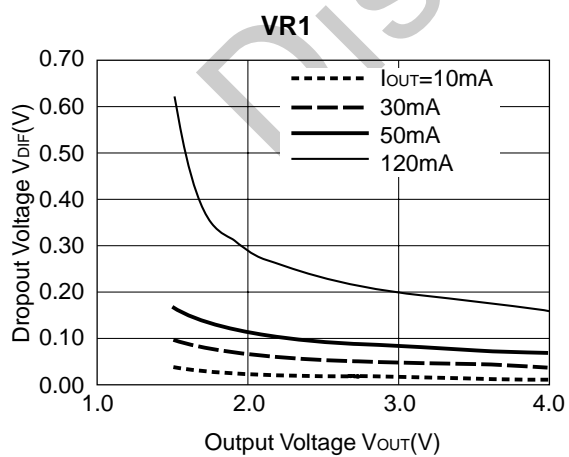


6) Supply Current vs. Temperature

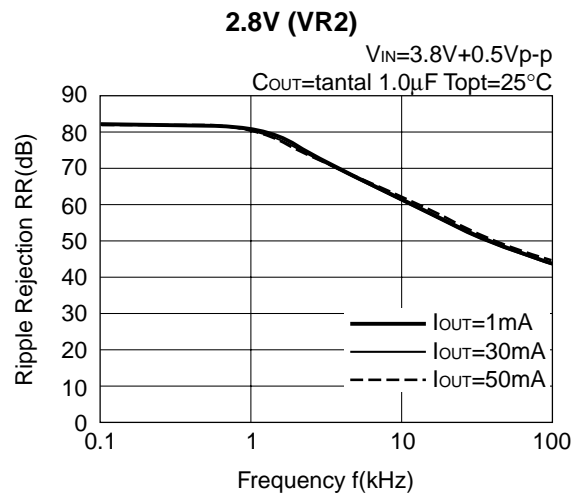
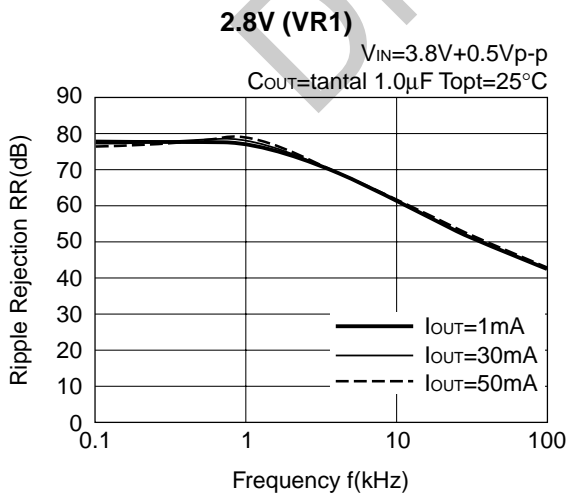
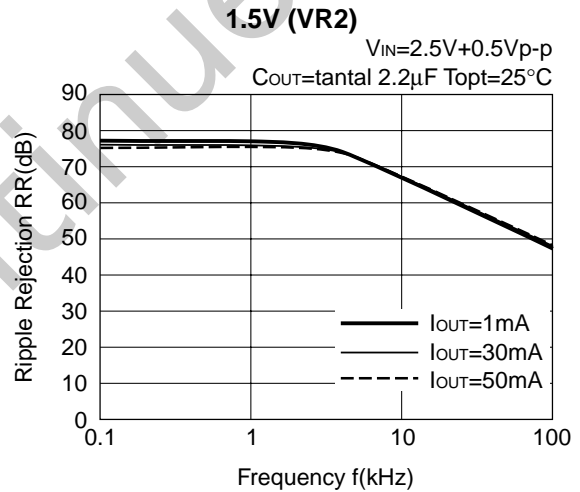
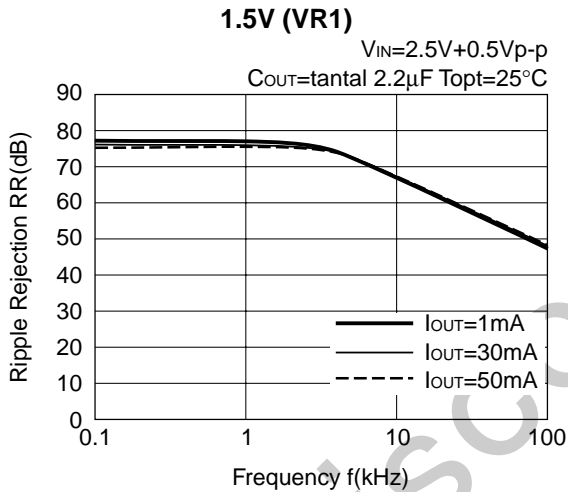
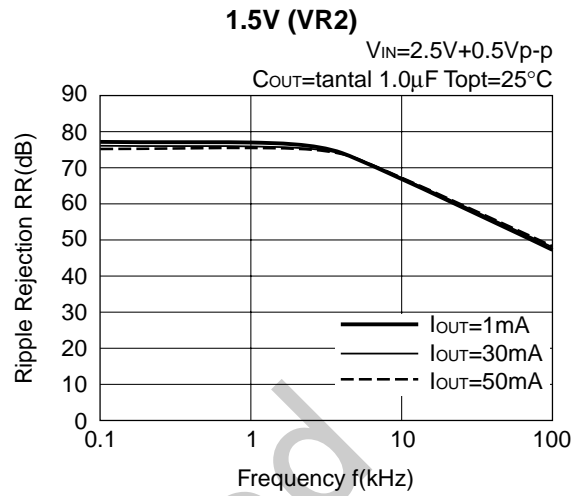
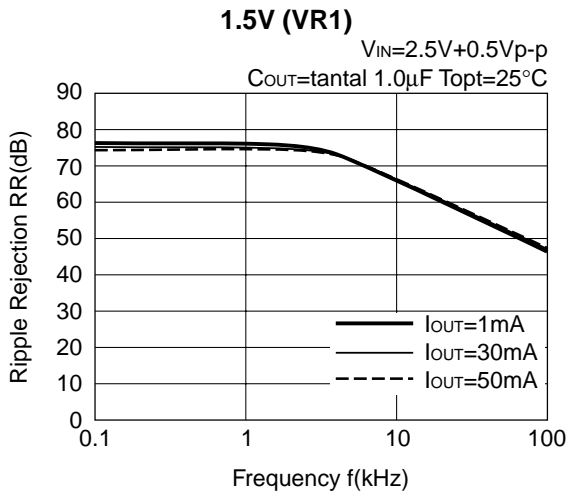




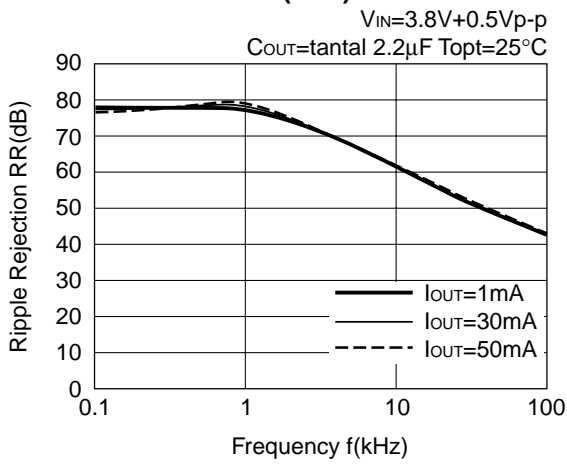
7) Dropout Voltage vs. Set Output Voltage



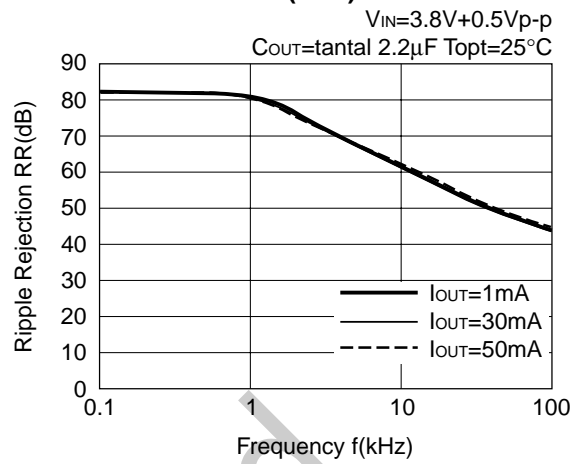
8) Ripple Rejection vs. Frequency



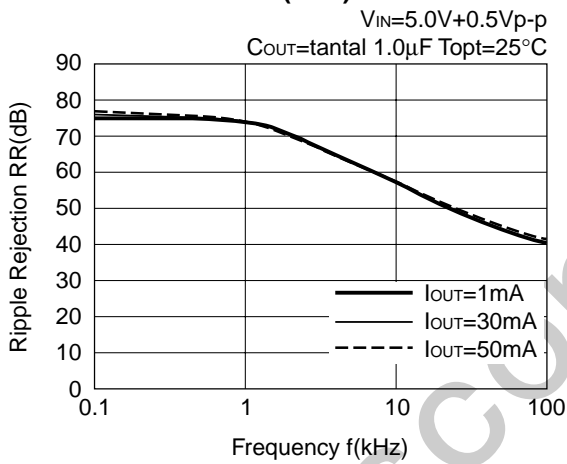
2.8V (VR1)



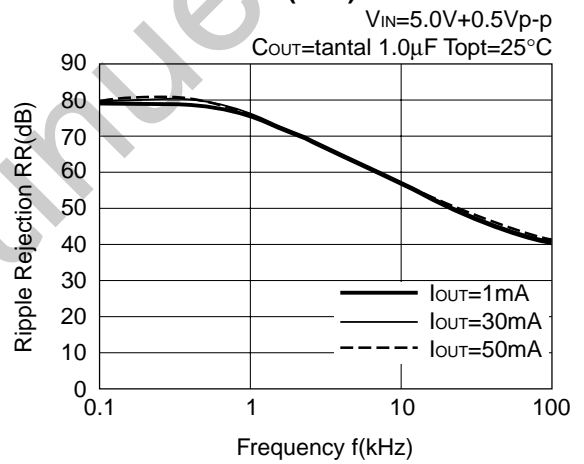
2.8V (VR2)



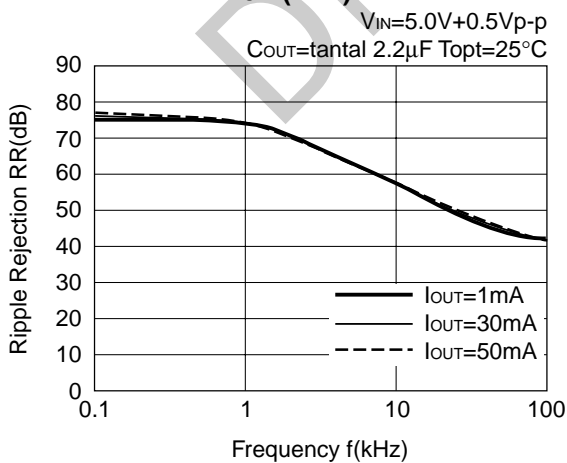
4.0V (VR1)



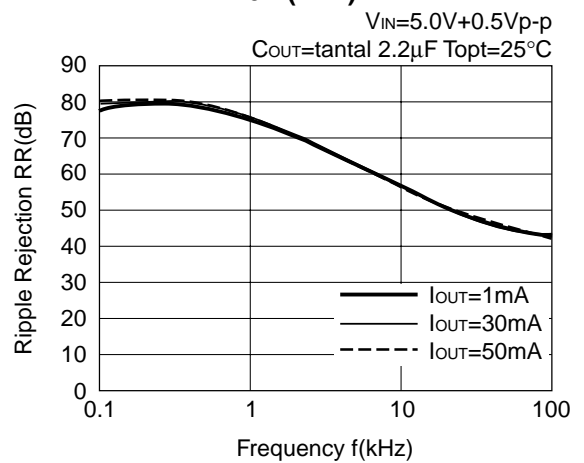
4.0V (VR2)



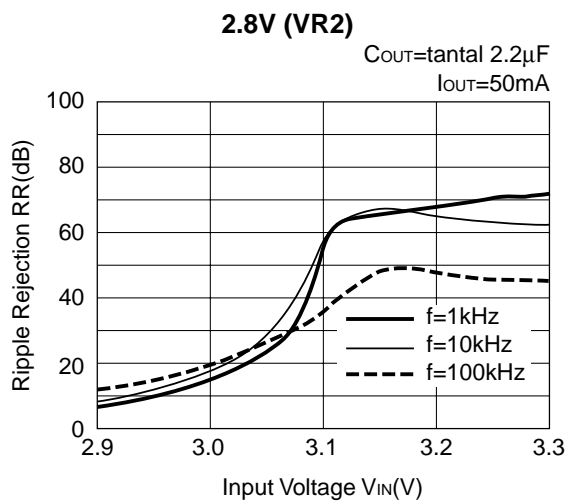
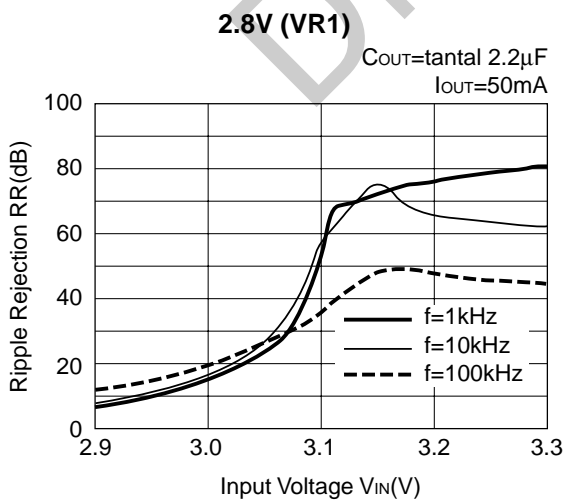
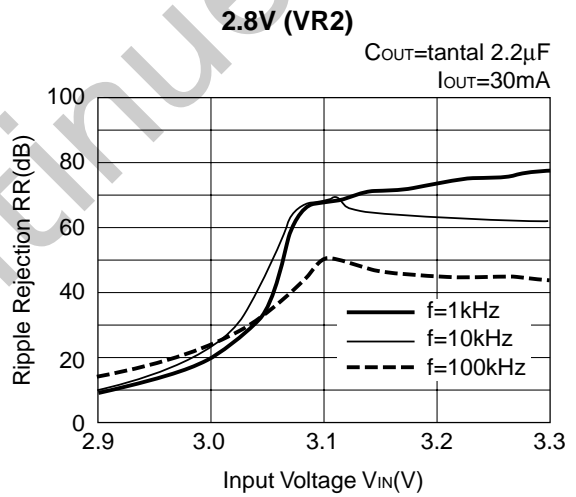
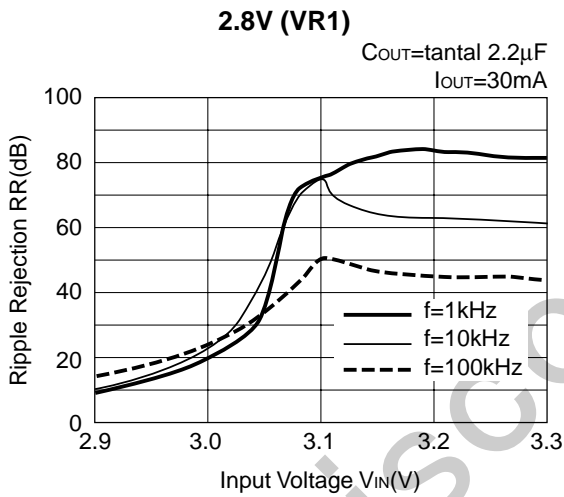
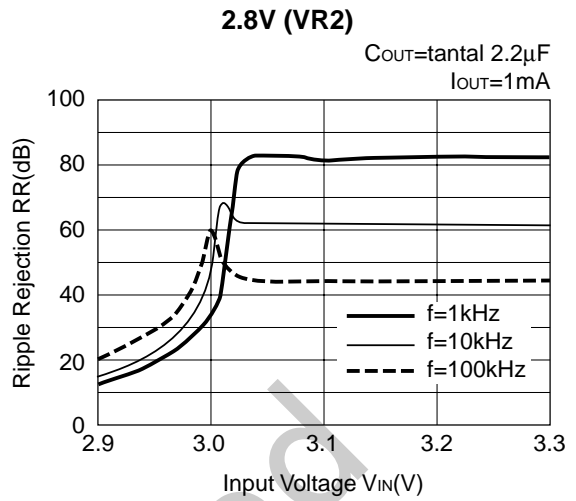
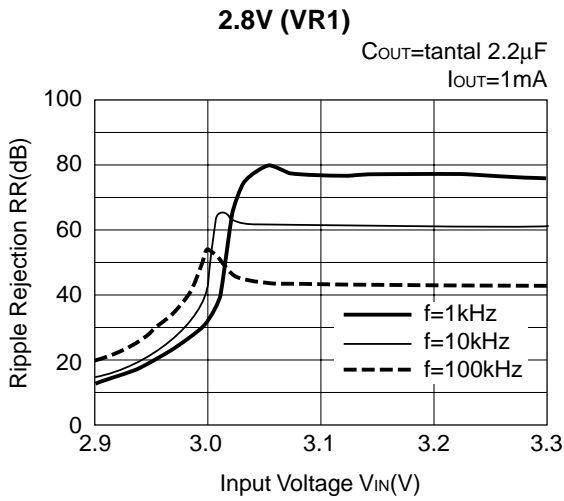
4.0V (VR1)



4.0V (VR2)



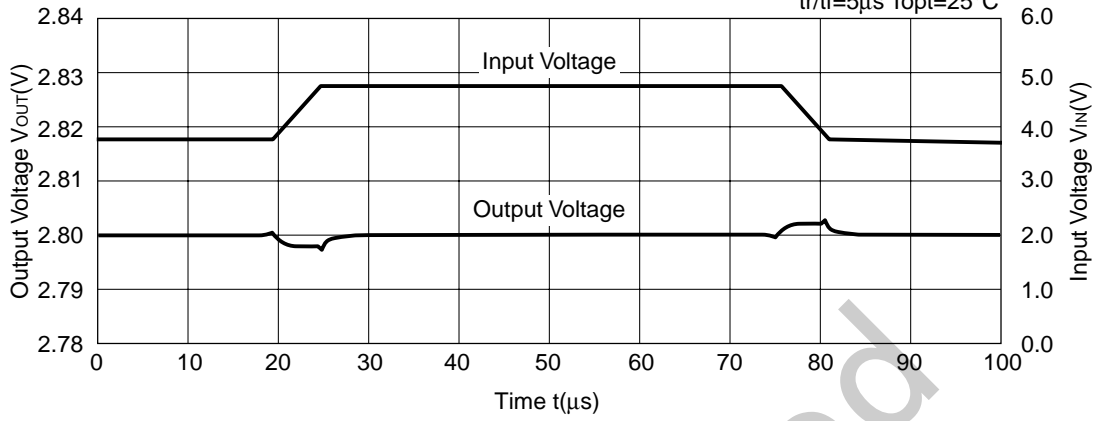
9) Ripple Rejection vs. Input Voltage (DC bias)



10) Input Transient Response

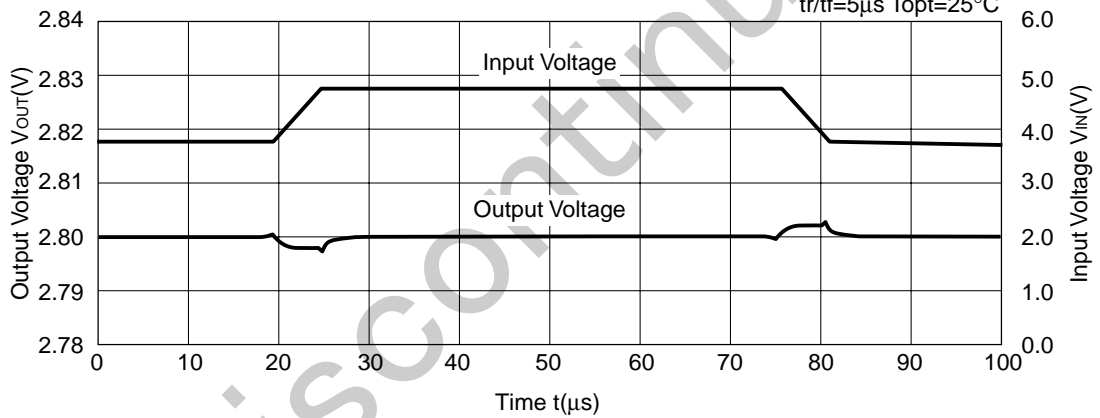
R5322N001x (2.8V, VR1)

$I_{OUT}=30\text{mA}$ $C_{OUT}=\text{tantal } 1.0\mu\text{F}$
 $t_r/t_f=5\mu\text{s}$ $T_{opt}=25^\circ\text{C}$



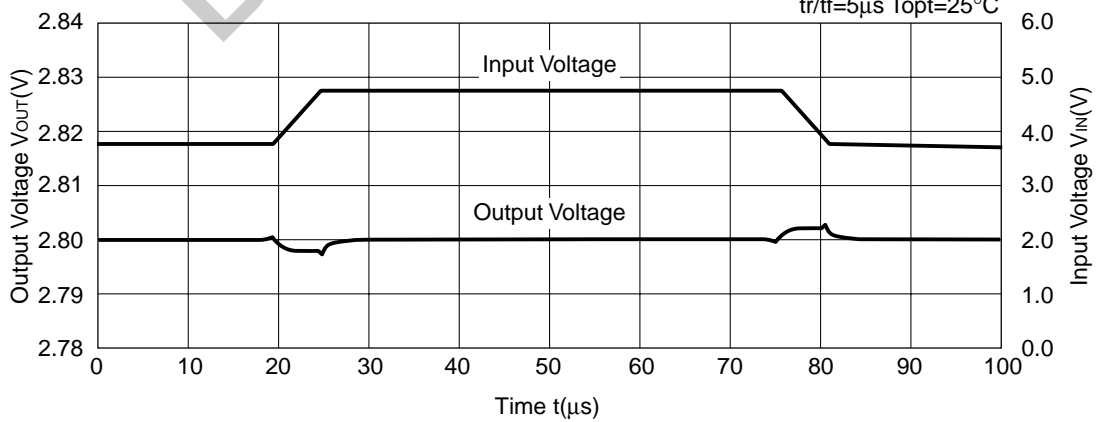
R5322N001x (2.8V, VR1)

$I_{OUT}=30\text{mA}$ $C_{OUT}=\text{tantal } 2.2\mu\text{F}$
 $t_r/t_f=5\mu\text{s}$ $T_{opt}=25^\circ\text{C}$



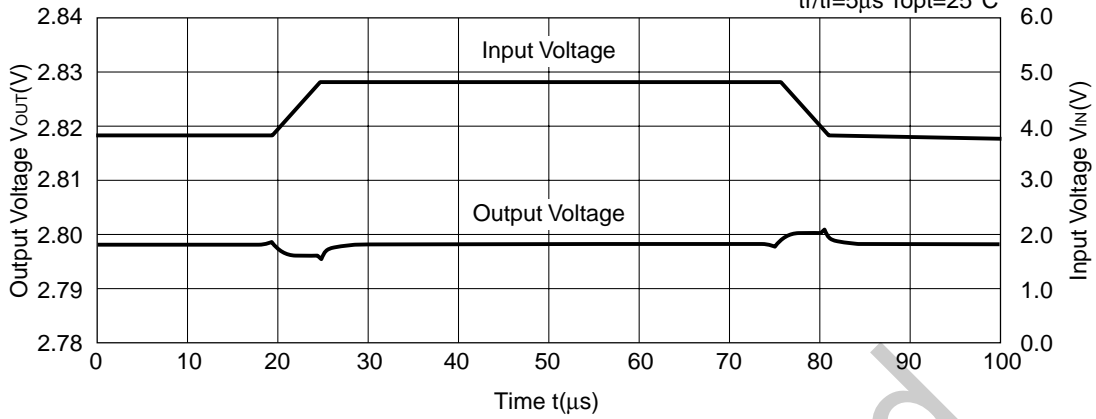
R5322N001x (2.8V, VR1)

$I_{OUT}=30\text{mA}$ $C_{OUT}=\text{tantal } 6.8\mu\text{F}$
 $t_r/t_f=5\mu\text{s}$ $T_{opt}=25^\circ\text{C}$



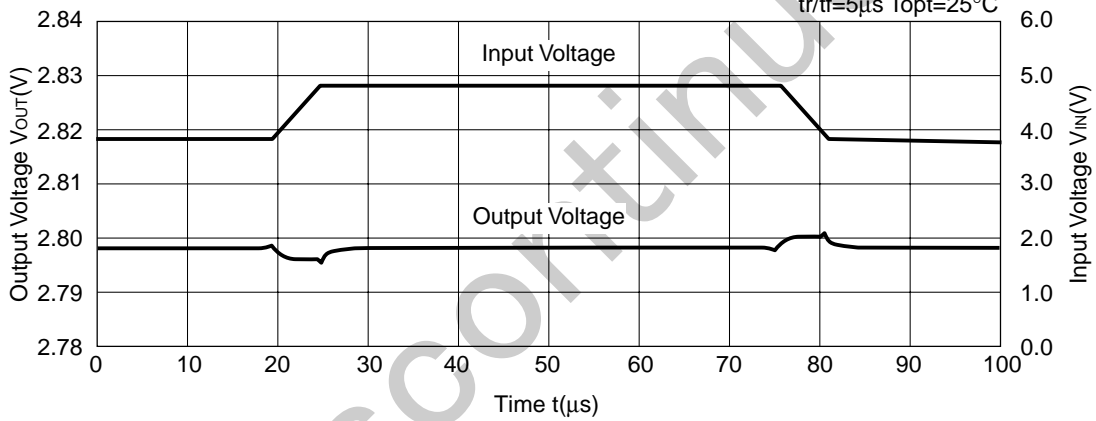
R5322N001x (2.8V, VR2)

$I_{OUT}=30\text{mA}$ $C_{OUT}=\text{tantal } 1.0\mu\text{F}$
 $t_r/t_f=5\mu\text{s}$ $T_{opt}=25^\circ\text{C}$



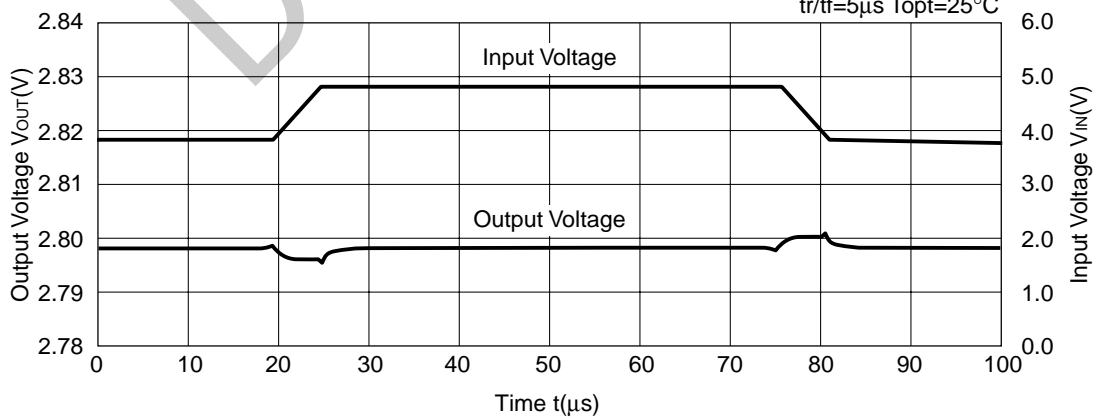
R5322N001x (2.8V, VR2)

$I_{OUT}=30\text{mA}$ $C_{OUT}=\text{tantal } 2.2\mu\text{F}$
 $t_r/t_f=5\mu\text{s}$ $T_{opt}=25^\circ\text{C}$



R5322N001x (2.8V, VR2)

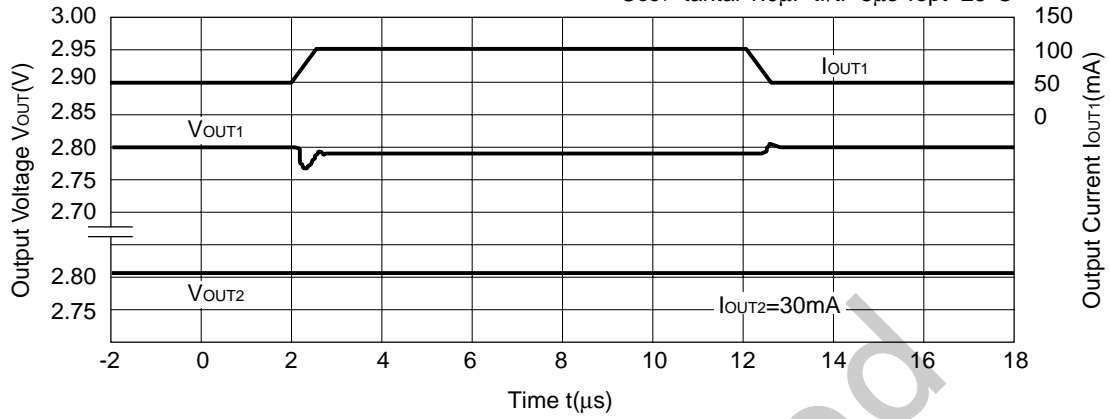
$I_{OUT}=30\text{mA}$ $C_{OUT}=\text{tantal } 6.8\mu\text{F}$
 $t_r/t_f=5\mu\text{s}$ $T_{opt}=25^\circ\text{C}$



11) Load Transient Response

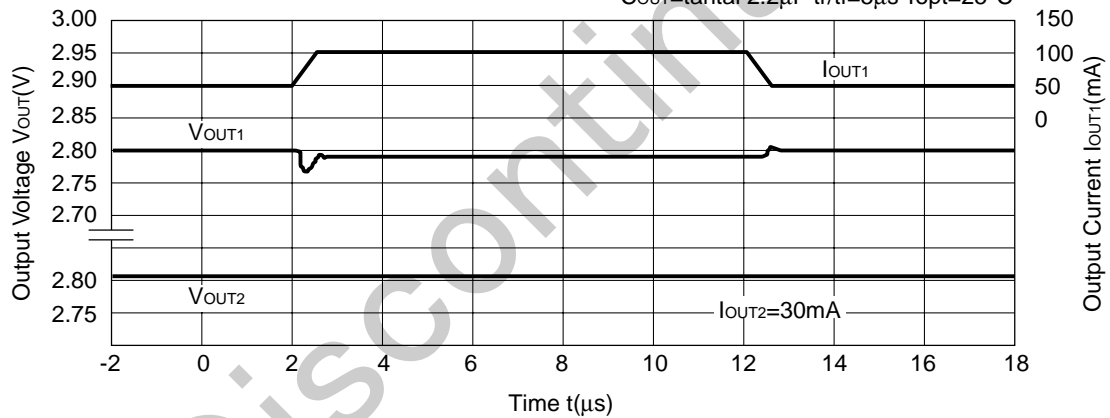
R5322N001x (VR1=2.8V)

$I_{OUT}=50\text{mA} \leftrightarrow 100\text{mA}$ $V_{IN}=3.8\text{V}$ $C_{IN}=\text{tantal } 1.0\mu\text{F}$
 $C_{OUT}=\text{tantal } 1.0\mu\text{F}$ $t_r/t_f=5\mu\text{s}$ $T_{opt}=25^\circ\text{C}$



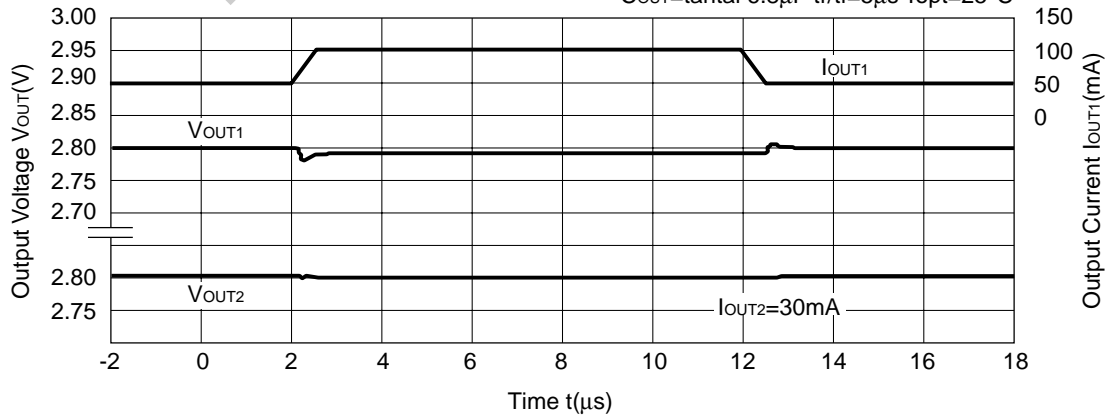
R5322N001x (VR1=2.8V)

$I_{OUT}=50\text{mA} \leftrightarrow 100\text{mA}$ $V_{IN}=3.8\text{V}$ $C_{IN}=\text{tantal } 1.0\mu\text{F}$
 $C_{OUT}=\text{tantal } 2.2\mu\text{F}$ $t_r/t_f=5\mu\text{s}$ $T_{opt}=25^\circ\text{C}$



R5322N001x (VR1=2.8V)

$I_{OUT}=50\text{mA} \leftrightarrow 100\text{mA}$ $V_{IN}=3.8\text{V}$ $C_{IN}=\text{tantal } 1.0\mu\text{F}$
 $C_{OUT}=\text{tantal } 6.8\mu\text{F}$ $t_r/t_f=5\mu\text{s}$ $T_{opt}=25^\circ\text{C}$

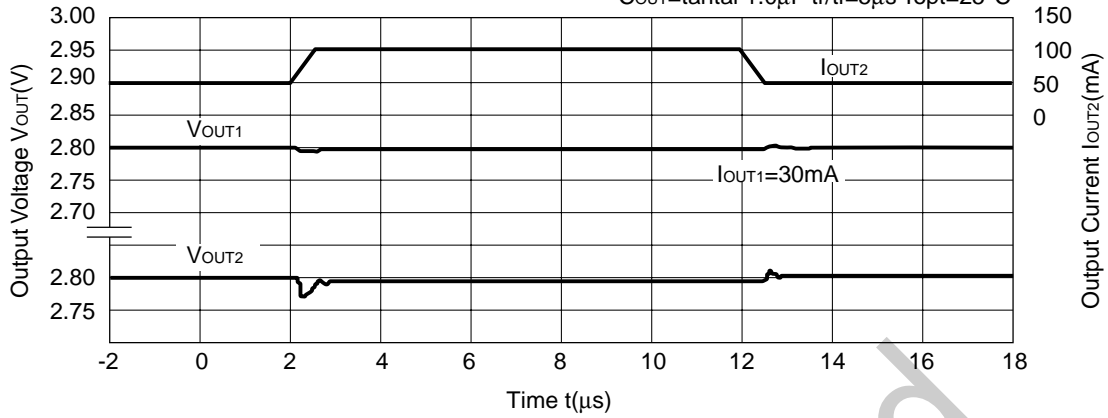


R5322N

Discontinued

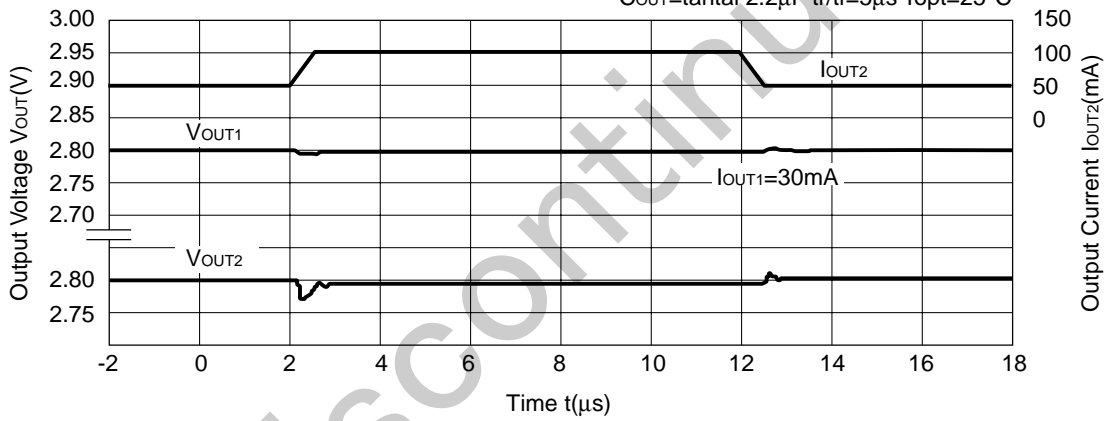
R5322N001x (VR2=2.8V)

$I_{OUT}=50\text{mA} \leftrightarrow 100\text{mA}$ $V_{IN}=3.8\text{V}$ $C_{IN}=\text{tantal } 1.0\mu\text{F}$
 $C_{OUT}=\text{tantal } 1.0\mu\text{F}$ $tr/tf=5\mu\text{s}$ $T_{opt}=25^\circ\text{C}$



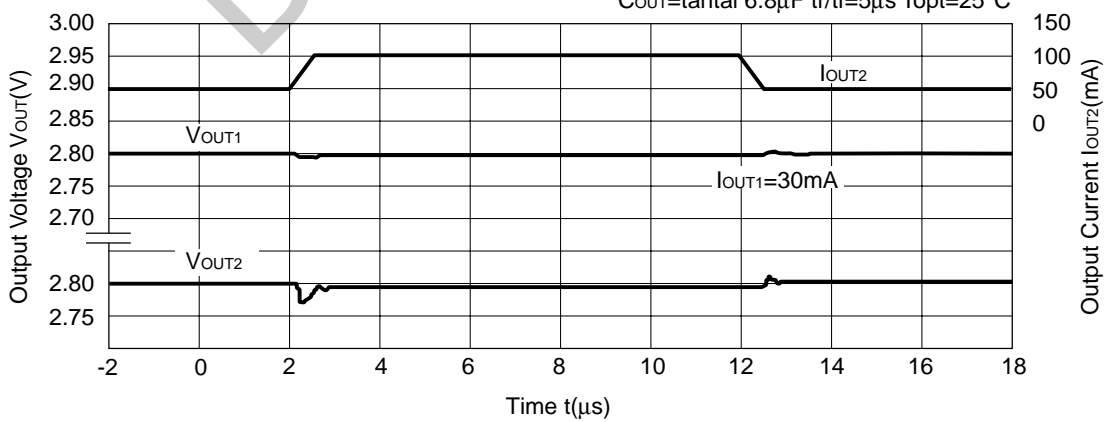
R5322N00x (VR2=2.8V)

$I_{OUT}=50\text{mA} \leftrightarrow 100\text{mA}$ $V_{IN}=3.8\text{V}$ $C_{IN}=\text{tantal } 1.0\mu\text{F}$
 $C_{OUT}=\text{tantal } 2.2\mu\text{F}$ $tr/tf=5\mu\text{s}$ $T_{opt}=25^\circ\text{C}$



R5322N00x (VR2=2.8V)

$I_{OUT}=50\text{mA} \leftrightarrow 100\text{mA}$ $V_{IN}=3.8\text{V}$ $C_{IN}=\text{tantal } 1.0\mu\text{F}$
 $C_{OUT}=\text{tantal } 6.8\mu\text{F}$ $tr/tf=5\mu\text{s}$ $T_{opt}=25^\circ\text{C}$



TECHNICAL NOTES

When using these ICs, consider the following points:

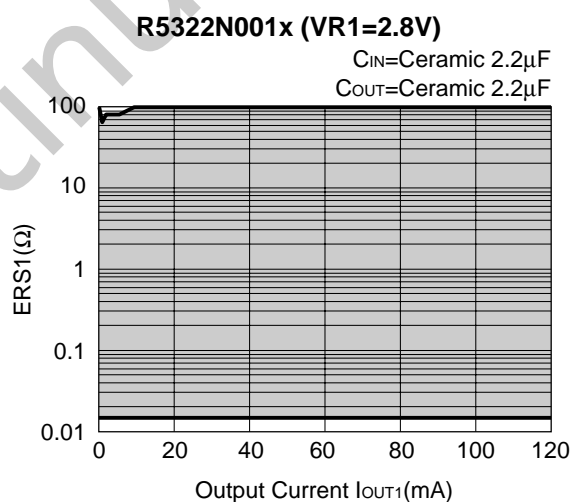
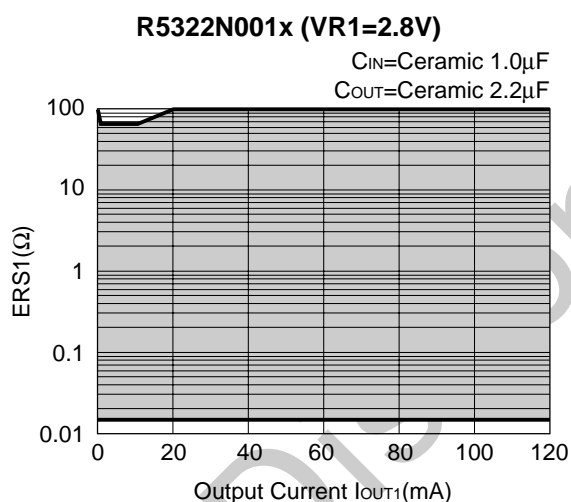
In these ICs, phase compensation is made for securing stable operation even if the load current is varied. For this purpose, be sure to use a 2.2 μ F or more capacitance C_{OUT} with good frequency characteristics and ESR (Equivalent Series Resistance) of which is in the range described as follows:

The relations between I_{OUT} (Output Current) and ESR of Output Capacitor are shown below. The conditions when the white noise level is under 40 μ V (Avg.) are marked as the hatched area in the graph.

(Note: When a ceramic capacitor is connected to the Output Pin as Output capacitor for phase compensation, the operation might be unstable unless as much as 1W resistor is connected between the capacitor and GND instead of ESR. Test these ICs with as same external components as ones to be used on the PCB.)

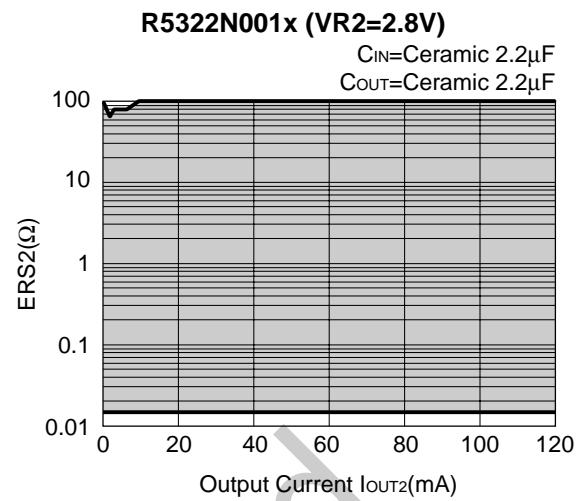
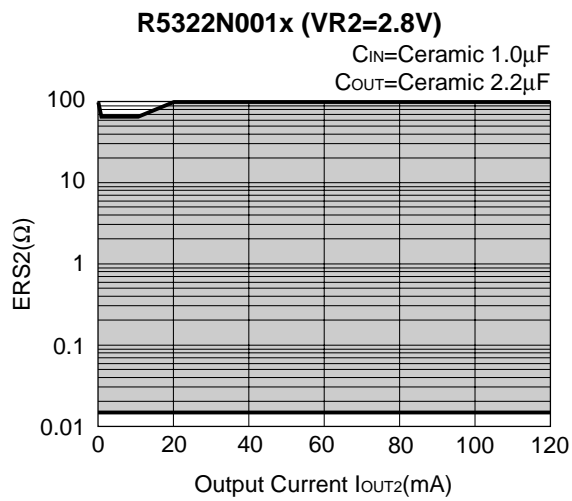
<Test conditions>

- (1) $V_{IN}=3.8V$
- (2) Frequency band: 10Hz to 2MHz
- (3) Temperature: 25°C



R5322N

Discontinued



- Make V_{DD} and GND line sufficient. When the impedance of these is high, the noise might be picked up or not work correctly.
- Connect the capacitor with a capacitance of 1 μ F or more between V_{DD} and GND as close as possible.
- Set external components, especially Output Capacitor, as close as possible to the ICs and make wiring shortest.



1. The products and the product specifications described in this document are subject to change or discontinuation of production without notice for reasons such as improvement. Therefore, before deciding to use the products, please refer to Ricoh sales representatives for the latest information thereon.
2. The materials in this document may not be copied or otherwise reproduced in whole or in part without prior written consent of Ricoh.
3. Please be sure to take any necessary formalities under relevant laws or regulations before exporting or otherwise taking out of your country the products or the technical information described herein.
4. The technical information described in this document shows typical characteristics of and example application circuits for the products. The release of such information is not to be construed as a warranty of or a grant of license under Ricoh's or any third party's intellectual property rights or any other rights.
5. The products listed in this document are intended and designed for use as general electronic components in standard applications (office equipment, telecommunication equipment, measuring instruments, consumer electronic products, amusement equipment etc.). Those customers intending to use a product in an application requiring extreme quality and reliability, for example, in a highly specific application where the failure or misoperation of the product could result in human injury or death (aircraft, spacevehicle, nuclear reactor control system, traffic control system, automotive and transportation equipment, combustion equipment, safety devices, life support system etc.) should first contact us.
6. We are making our continuous effort to improve the quality and reliability of our products, but semiconductor products are likely to fail with certain probability. In order to prevent any injury to persons or damages to property resulting from such failure, customers should be careful enough to incorporate safety measures in their design, such as redundancy feature, fire containment feature and fail-safe feature. We do not assume any liability or responsibility for any loss or damage arising from misuse or inappropriate use of the products.
7. Anti-radiation design is not implemented in the products described in this document.
8. The X-ray exposure can influence functions and characteristics of the products. Confirm the product functions and characteristics in the evaluation stage.
9. WLCSP products should be used in light shielded environments. The light exposure can influence functions and characteristics of the products under operation or storage.
10. There can be variation in the marking when different AOI (Automated Optical Inspection) equipment is used. In the case of recognizing the marking characteristic with AOI, please contact Ricoh sales or our distributor before attempting to use AOI.
11. Please contact Ricoh sales representatives should you have any questions or comments concerning the products or the technical information.



Ricoh is committed to reducing the environmental loading materials in electrical devices with a view to contributing to the protection of human health and the environment.

Ricoh has been providing RoHS compliant products since April 1, 2006 and Halogen-free products since April 1, 2012.

RICOH RICOH ELECTRONIC DEVICES CO., LTD.

<http://www.e-devices.ricoh.co.jp/en/>

Sales & Support Offices

RICOH ELECTRONIC DEVICES CO., LTD.

Higashi-Shinagawa Office (International Sales)
3-32-3, Higashi-Shinagawa, Shinagawa-ku, Tokyo 140-8655, Japan
Phone: +81-3-5479-2857 Fax: +81-3-5479-0502

RICOH EUROPE (NETHERLANDS) B.V.

Semiconductor Support Centre
Prof. W.H. Keesomlaan 1, 1183 DJ Amstelveen, The Netherlands
Phone: +31-20-5474-309

RICOH INTERNATIONAL B.V. - German Branch

Semiconductor Sales and Support Centre
Oberrather Strasse 6, 40472 Düsseldorf, Germany
Phone: +49-211-6546-0

RICOH ELECTRONIC DEVICES KOREA CO., LTD.

3F, Haesung Bldg, 504, Teheran-ro, Gangnam-gu, Seoul, 135-725, Korea
Phone: +82-2-2135-5700 Fax: +82-2-2051-5713

RICOH ELECTRONIC DEVICES SHANGHAI CO., LTD.

Room 403, No.2 Building, No.690 Bibo Road, Pu Dong New District, Shanghai 201203, People's Republic of China
Phone: +86-21-5027-3200 Fax: +86-21-5027-3299

RICOH ELECTRONIC DEVICES CO., LTD.

Taipei office
Room 109, 10F-1, No.51, Hengyang Rd., Taipei City, Taiwan (R.O.C.)
Phone: +886-2-2313-1621/1622 Fax: +886-2-2313-1623