

150 mA 10 V LDO Regulator for Automotive Applications

NO. EC-245-150210

OUTLINE

The RP171x is a LDO regulator featuring 150 mA output current that is developed with CMOS process technology. The RP171x offers the maximum input voltage of 10 V which makes it ideal for the use in car audio equipment, car navigation system and ETC system. The RP171x provides a supply current as low as Typ. 23 μ A and achieves fast-response characteristics.

The RP171x offers an output voltage as low as 1.2 V. Compared to existing high-speed lines, the RP171x provides excellent output voltage accuracy and output voltage temperature coefficient

Internally, the RP171x consists of a fold-back protection circuit and a thermal shutdown circuit. A standby mode with ultra low supply current has been realized by a chip enable function.

The RP171x is available in a 5-pin SOT-23-5 package with high power dissipation.

FEATURES

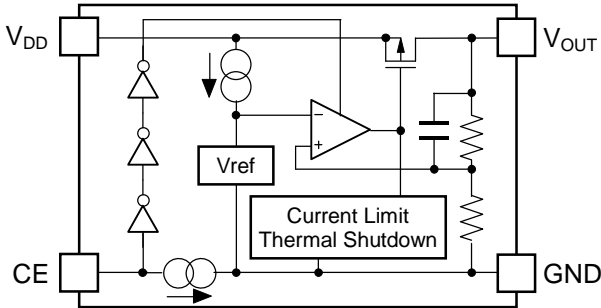
- Input Voltage Range (Absolute Maximum Ratings) 2.6 V to 10 V (12 V)
- Operating Temperature -40°C to 105°C
- Supply Current Typ. 23 μ A ($V_{IN} = V_{SET} + 1.0$ V)
- Standby Current Typ. 0.1 μ A ($V_{IN} = 10.0$ V, CE = "L")
- Output Voltage Range 1.2 V/1.5 V/1.8 V/2.5 V/2.8 V/3.0 V/3.3 V/3.4 V/5.0 V/6.0 V
* Contact Ricoh sales representatives for other voltages.
- Output Voltage Accuracy $\pm 1.0\%$
- Output Voltage Temperature Coefficient Typ. ± 80 ppm/°C
- Line Regulation Typ. 0.02%/V
- Dropout Voltage Typ. 0.4 V ($I_{OUT} = 150$ mA, $V_{SET} = 2.8$ V)
- Ripple Rejection Typ. 70 dB ($f = 1$ kHz)
- Fold-back Protection Circuit Typ. 40 mA
- Constant Slope Circuit (Soft-start Function)
- Thermal Shutdown Circuit Stops at 165°C
- Auto-discharge Function RP171xxxxD
- Package SOT-23-5
- Ceramic Capacitor Compatible 1.0 μ F or more

APPLICATIONS

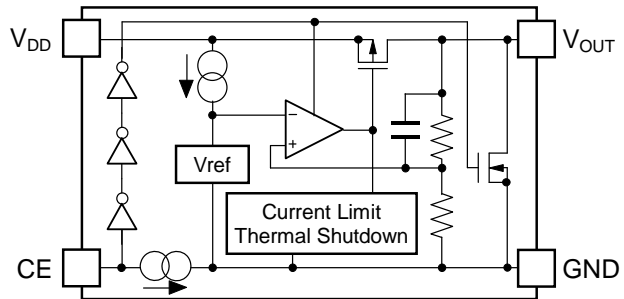
- Power source for car audio equipment, car navigation system, ETC system, etc.

BLOCK DIAGRAM

RP171xxxxB Block Diagram



RP171xxxxD Block Diagram



SELECTION GUIDE

The set output voltage, the auto-discharge function and the automotive class are user-selectable options.

Product Name	Package	Quantity per Reel	Pb Free	Halogen Free
RP171Nxx1*-TR-#E	SOT-23-5	3,000 pcs	Yes	Yes

xx: Specify the set output voltage (V_{SET}) within the range of
 1.2 V / 1.5 V / 1.8 V / 2.5 V / 2.8 V / 3.0 V / 3.3 V / 3.4 V / 5.0 V / 6.0 V
 * Contact Ricoh sales representatives for other voltages.

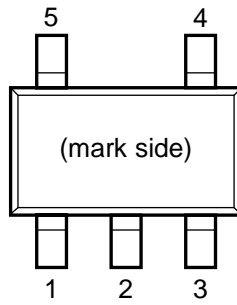
*: Select from (B) CE = Active-high without auto-discharge function or (D) CE = Active-high with Auto-discharge function.

#: Specify the automotive class code.

	Operating Temperature Range	Guaranteed Specs Temperature Range	Screening
A	-40°C to 105°C	25°C	High temperature
J	-40°C to 105°C	-40°C to 105°C	High and low temperature

*1 Auto-discharge function quickly lowers the output voltage to 0 V by releasing the electrical charge accumulated in the external capacitor when the chip enable signal is switched from the active mode to the standby mode.

PIN DESCRIPTION



SOT-23-5 Pin Configuration

Pin No.	Symbol	Description
1	V _{DD}	Input Pin
2	GND	Ground Pin
3	CE	Chip Enable Pin, Active-high
4	NC	No Connection
5	V _{OUT}	Output Pin

ABSOLUTE MAXIMUM RATINGS

Symbol	Item	Rating	Unit
V _{IN}	Input Voltage	12	V
V _{CE}	Input Voltage (CE Pin)	12	V
V _{OUT}	Output Voltage	-0.3 to V _{IN} +0.3	V
I _{OUT}	Output Current	330	mA
P _D	Power Dissipation (Standard Land Pattern) ^{*1}	525	mW
T _j	Junction Temperature	-40 to 150	°C
T _{stg}	Storage Temperature Range	-55 to 150	°C

^{*1} Refer to *PACKAGE INFORMATION* for detailed information.

ABSOLUTE MAXIMUM RATINGS

Electronic and mechanical stress momentarily exceeded absolute maximum ratings may cause the permanent damages and may degrade the life time and safety for both device and system using the device in the field. The functional operation at or over these absolute maximum ratings is not assured.

RECOMMENDED OPERATING CONDITIONS

Symbol	Item	Rating	Unit
V _{IN}	Input Voltage	2.6 to 10	V
T _a	Operating Temperature Range	-40 to 105	°C

RECOMMENDED OPERATING CONDITIONS

All of electronic equipment should be designed that the mounted semiconductor devices operate within the recommended operating conditions. The semiconductor devices cannot operate normally over the recommended operating conditions, even if when they are used over such ratings by momentary electronic noise or surge. And the semiconductor devices may receive serious damage when they continue to operate over the recommended operating conditions.

ELECTRICAL CHARACTERISTICS

$V_{IN} = V_{SET} + 1.0\text{ V}$, $I_{OUT} = 1\text{ mA}$, unless otherwise noted.

The specifications surrounded by are guaranteed by design engineering at $-40^{\circ}\text{C} \leq T_a \leq 105^{\circ}\text{C}$.

RP171x (-AE)

($T_a = 25^{\circ}\text{C}$)

Symbol	Item	Conditions		Min.	Typ.	Max.	Unit
V_{OUT}	Output Voltage	$1.5\text{ V} < V_{SET}$	$T_a = 25^{\circ}\text{C}$	$V_{SET} \times 0.99$		$V_{SET} \times 1.01$	V
			$-40^{\circ}\text{C} \leq T_a \leq 105^{\circ}\text{C}$	$V_{SET} \times 0.965$		$V_{SET} \times 1.03$	
		$V_{SET} \leq 1.5\text{ V}$	$T_a = 25^{\circ}\text{C}$	-15		15	mV
			$-40^{\circ}\text{C} \leq T_a \leq 105^{\circ}\text{C}$	-53		45	
I_{OUT}	Output Current			150			mA
$\frac{\Delta V_{OUT}}{\Delta I_{OUT}}$	Load Regulation	$0.1\text{ mA} \leq I_{OUT} \leq 150\text{ mA}$			5	45	mV
V_{DIF}	Dropout Voltage	$I_{OUT} = 150\text{ mA}$		Refer to the <i>Product-specific Electrical Characteristics</i>			
I_{SS}	Supply Current	$I_{OUT} = 0\text{ mA}$			23	45	μA
Istandby	Standby Current	$V_{IN} = 10.0\text{ V}$, $V_{CE} = \text{GND}$			0.1	1.2	μA
$\frac{\Delta V_{OUT}}{\Delta V_{IN}}$	Line Regulation	$V_{SET} + 0.5\text{ V} \leq V_{IN} \leq 10.0\text{ V}$ Note: When $V_{OUT} \leq 2.1\text{ V}$, $2.6\text{ V} \leq V_{IN} \leq 10.0\text{ V}$			± 0.02	± 0.25	%/V
I_{SC}	Short Current Limit	$V_{OUT} = 0\text{ V}$			40		mA
I_{PD}	CE Pull-down Current				0.30		μA
V_{CEH}	CE Input Voltage "H"			1.7			V
V_{CEL}	CE Input Voltage "L"					0.8	V
T_{TSD}	Thermal Shutdown Temperature	Junction Temperature			165		$^{\circ}\text{C}$
T_{TSR}	Thermal Shutdown Released Temperature	Junction Temperature			110		$^{\circ}\text{C}$
R_{LOW}	Auto-discharge Nch Tr. ON Resistance (RP171xxxxD)	$V_{CE} = 0\text{ V}$, $V_{IN} = 7.0\text{ V}$			250		Ω

All test items listed under *ELECTRICAL CHARACTERISTICS* are done under the pulse load condition ($T_j \approx T_a = 25^{\circ}\text{C}$).

RP171N

NO. EC-245-150210

Product-specific Electrical CharacteristicsThe specifications surrounded by are guaranteed by design engineering at $-40^{\circ}\text{C} \leq T_a \leq 105^{\circ}\text{C}$.

Product-specific Electrical Characteristics

(Ta = 25°C)

Product Name	V _{OUT} (V) (Ta = 25°C)			V _{OUT} (V) (-40°C ≤ Ta ≤ 105°C)			V _{DIF} (V) (I _{OUT} = 150 mA)	
	MIN.	TYP.	MAX.	MIN.	TYP.	MAX.	TYP.	MAX.
RP171x121x	1.185	1.200	1.215	1.147	1.200	1.245	-	1.405
RP171x151x	1.485	1.500	1.515	1.447	1.500	1.545	-	1.105
RP171x181x	1.782	1.800	1.818	1.737	1.800	1.854	-	0.805
RP171x251x	2.475	2.500	2.525	2.413	2.500	2.575	0.400	0.600
RP171x281x	2.772	2.800	2.828	2.702	2.800	2.884		
RP171x301x	2.970	3.000	3.030	2.895	3.000	3.090	0.300	0.500
RP171x331x	3.267	3.300	3.333	3.185	3.300	3.399		
RP171x341x	3.366	3.400	3.434	3.281	3.400	3.502		
RP171x501x	4.950	5.000	5.050	4.825	5.000	5.150	0.250	0.420
RP171x601x	5.940	6.000	6.060	5.790	6.000	6.180		

$V_{IN} = V_{SET} + 1.0 \text{ V}$, $I_{OUT} = 1 \text{ mA}$, unless otherwise noted.

RP171x (-JE)

 ($-40^{\circ}\text{C} \leq T_a \leq 105^{\circ}\text{C}$)

Symbol	Item	Conditions	Min.	Typ.	Max.	Unit
V_{OUT}	Output Voltage	$1.5 \text{ V} < V_{SET}$	$T_a = 25^{\circ}\text{C}$	$V_{SET} \times 0.99$	$V_{SET} \times 1.01$	V
			$-40^{\circ}\text{C} \leq T_a \leq 105^{\circ}\text{C}$	$V_{SET} \times 0.965$	$V_{SET} \times 1.03$	
		$V_{SET} \leq 1.5 \text{ V}$	$T_a = 25^{\circ}\text{C}$	-15	15	mV
			$-40^{\circ}\text{C} \leq T_a \leq 105^{\circ}\text{C}$	-53	45	
I_{OUT}	Output Current		150			mA
$\frac{\Delta V_{OUT}}{\Delta I_{OUT}}$	Load Regulation	$0.1 \text{ mA} \leq I_{OUT} \leq 150 \text{ mA}$		5	45	mV
V_{DIF}	Dropout Voltage	$I_{OUT} = 150 \text{ mA}$	Refer to the <i>Product-specific Electrical Characteristics</i>			
I_{SS}	Supply Current	$I_{OUT} = 0 \text{ mA}$		23	45	μA
Istandby	Standby Current	$V_{IN} = 10.0 \text{ V}$, $V_{CE} = \text{GND}$		0.1	1.2	μA
$\frac{\Delta V_{OUT}}{\Delta V_{IN}}$	Line Regulation	$V_{SET} + 0.5 \text{ V} \leq V_{IN} \leq 10.0 \text{ V}$ Note: When $V_{OUT} \leq 2.1 \text{ V}$, $2.6 \text{ V} \leq V_{IN} \leq 10.0 \text{ V}$		± 0.02	± 0.25	%/V
I_{SC}	Short Current Limit	$V_{OUT} = 0 \text{ V}$		40		mA
I_{PD}	CE Pull-down Current			0.30		μA
V_{CEH}	CE Input Voltage "H"		1.7			V
V_{CEL}	CE Input Voltage "L"				0.8	V
T_{TSD}	Thermal Shutdown Temperature	Junction Temperature		165		$^{\circ}\text{C}$
T_{TSR}	Thermal Shutdown Released Temperature	Junction Temperature		110		$^{\circ}\text{C}$
R_{LOW}	Auto-discharge Nch Tr. ON Resistance (RP171xxxxD)	$V_{CE} = 0 \text{ V}$, $V_{IN} = 7.0 \text{ V}$		250		Ω

RP171N

NO. EC-245-150210

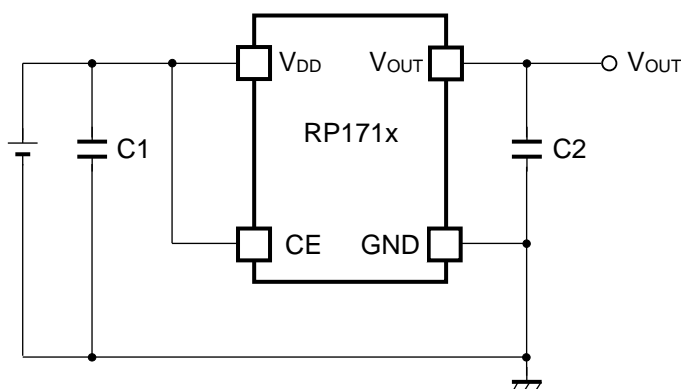
Product-specific Electrical Characteristics

Product-specific Electrical Characteristics

(-40°C ≤ Ta ≤ 105°C)

Product Name	V _{OUT} (V) (Ta = 25°C)			V _{OUT} (V) (-40°C ≤ Ta ≤ 105°C)			V _{DIF} (V) (I _{OUT} = 150 mA)	
	MIN.	TYP.	MAX.	MIN.	TYP.	MAX.	TYP.	MAX.
RP171x121x	1.185	1.200	1.215	1.147	1.200	1.245	-	1.405
RP171x151x	1.485	1.500	1.515	1.447	1.500	1.545	-	1.105
RP171x181x	1.782	1.800	1.818	1.737	1.800	1.854	-	0.805
RP171x251x	2.475	2.500	2.525	2.413	2.500	2.575	0.400	0.600
RP171x281x	2.772	2.800	2.828	2.702	2.800	2.884		
RP171x301x	2.970	3.000	3.030	2.895	3.000	3.090	0.300	0.500
RP171x331x	3.267	3.300	3.333	3.185	3.300	3.399		
RP171x341x	3.366	3.400	3.434	3.281	3.400	3.502		
RP171x501x	4.950	5.000	5.050	4.825	5.000	5.150	0.250	0.420
RP171x601x	5.940	6.000	6.060	5.790	6.000	6.180		

TYPICAL APPLICATION



RP171x Typical Application

External Components

Symbol	Description
C2 (C _{OUT})	1.0 μ F, Ceramic Capacitor, MURATA GRM155B31A105KE15

TECHNICAL NOTES

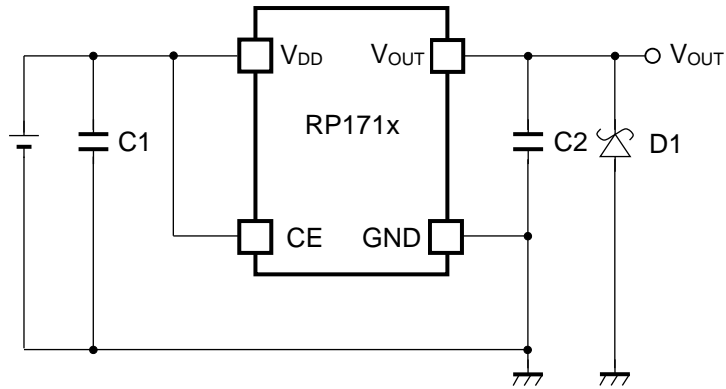
Phase Compensation

In the RP171x, phase compensation is provided to secure stable operation even when the load current is varied. For this purpose, use a 1.0 μ F or more output capacitor (C2) with good frequency characteristics and proper ESR (Equivalent Series Resistance).

In case of using a tantalum type capacitor and the ESR value of the capacitor is large, the output might be unstable. Evaluate the circuit including consideration of frequency characteristics.

PCB Layout

Ensure the V_{DD} and GND lines are sufficiently robust. If their impedance is too high, noise pickup or unstable operation may result. Connect a 1.0 μ F or more output capacitor (C1) with suitable values between the V_{DD} and GND pins, and as close as possible to the pins.

TYPICAL APPLICATION FOR IC CHIP BREAKDOWN PREVENTION

When a sudden surge of electrical current travels along the V_{OUT} pin and GND due to a short-circuit, electrical resonance of a circuit involving an output capacitor (C2) and a short circuit inductor generates a negative voltage and may damage the device or the load devices. Connecting a schottky diode (D1) between the V_{OUT} pin and GND has the effect of preventing damage to them.

PACKAGE INFORMATION

Power Dissipation (SOT-23-5)

Power Dissipation (P_D) of the package is dependent on PCB material, layout, and environmental conditions. The following conditions are used in this measurement. This data is taken from the SOT-23-6 package data.

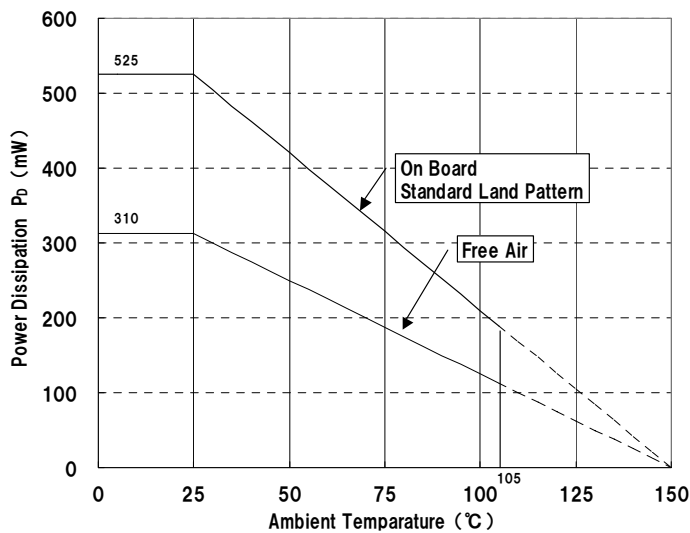
Measurement Conditions

	Standard Land Pattern
Environment	Mounting on Board (Wind Velocity = 0m/s)
Board Material	Glass Cloth Epoxy Plastic (Double-sided)
Board Dimensions	40 mm x 40 mm x 1.6 mm
Copper Ratio	Top-side: Approx. 50%, Back-side: Approx. 50%
Through-hole	$\phi 0.5$ mm x 44 pcs

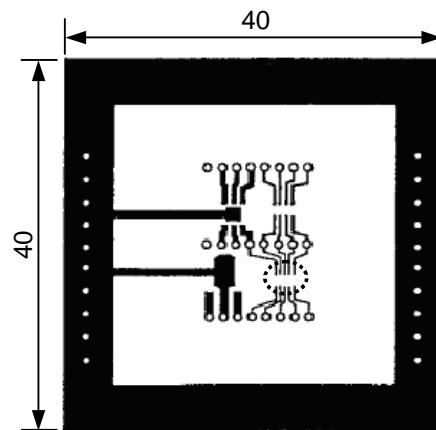
Measurement Result

($T_a = 25^\circ\text{C}$, $T_{j\text{max}} = 150^\circ\text{C}$)

	Standard Land Pattern	Free Air
Power Dissipation	525 mW	310 mW
Thermal Resistance	$\theta_{ja} = (150 - 25^\circ\text{C}) / 0.525\text{W} = 238^\circ\text{C/W}$	400°C/W



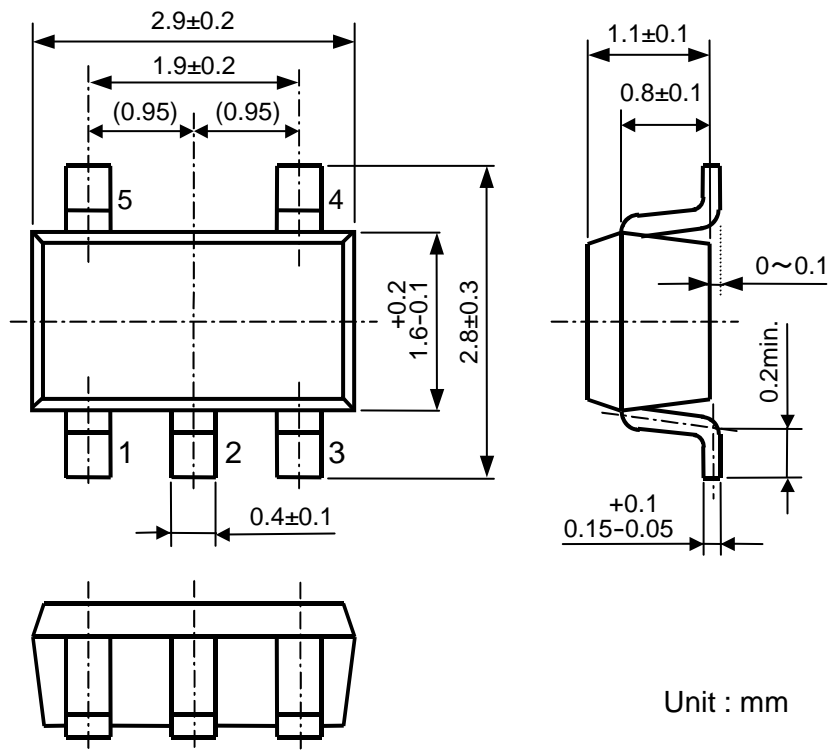
Power Dissipation



Measurement Board Pattern

 IC Mount Area (Unit: mm)

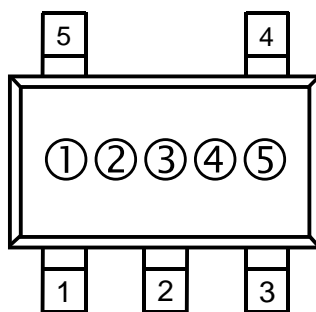
PACKAGE DIMENSIONS (SOT-23-5)



SOT-23-5 Package Dimensions

MARK SPECIFICATION (SOT-23-5)

- ①②③: Product Code ... Refer to MARK SPECIFICATION TABLE (SOT-23-5).
- ④⑤: Lot Number ... Alphanumeric Serial Number



SOT-23-5 Mark Specification

MARK SPECIFICATION TABLE (SOT-23-5)

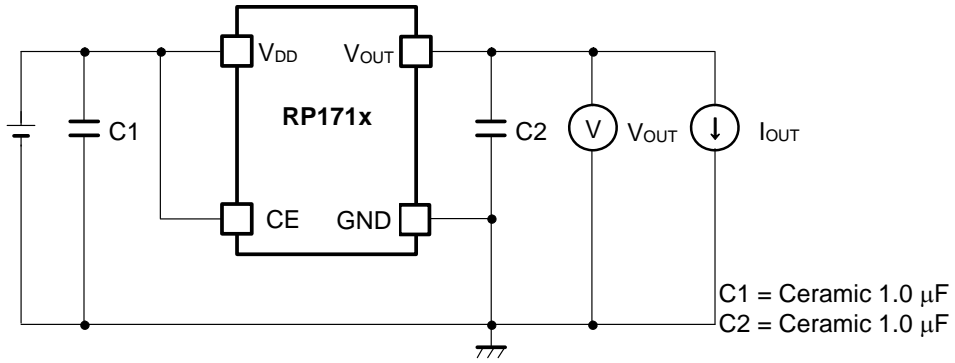
RP171Nxx1B

Product Name	①②③	V_{SET}
RP171N121B	J A A	1.2 V
RP171N151B	J A E	1.5 V
RP171N181B	J A H	1.8 V
RP171N251B	J A R	2.5 V
RP171N281B	J A U	2.8 V
RP171N301B	J A X	3.0 V
RP171N331B	K A A	3.3 V
RP171N341B	K A B	3.4 V
RP171N501B	K A T	5.0 V
RP171N601B	L A D	6.0 V

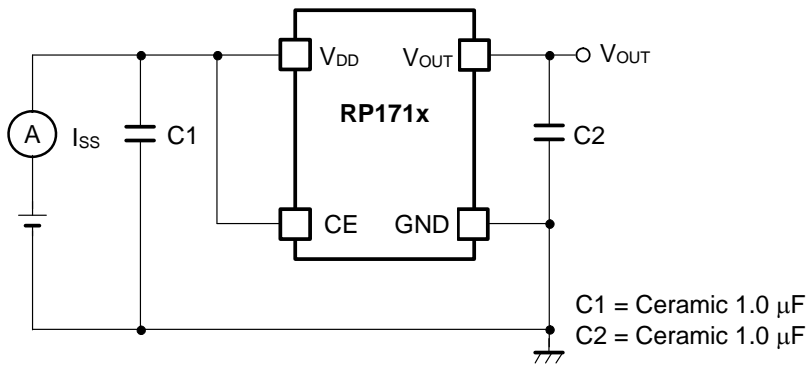
RP171Nxx1D

Product Name	①②③	V_{SET}
RP171N121D	J B A	1.2 V
RP171N151D	J B E	1.5 V
RP171N181D	J B H	1.8 V
RP171N251D	J B R	2.5 V
RP171N281D	J B U	2.8 V
RP171N301D	J B X	3.0 V
RP171N331D	K B A	3.3 V
RP171N341D	K B B	3.4 V
RP171N501D	K B T	5.0 V
RP171N601D	L B D	6.0 V

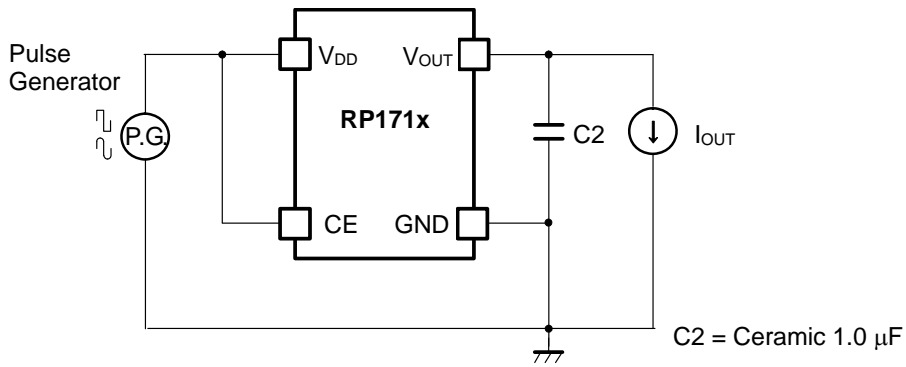
TEST CIRCUITS



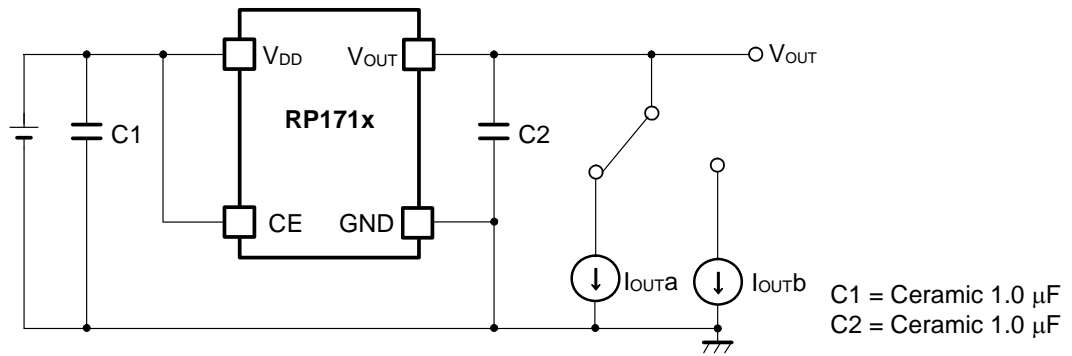
Basic Test Circuit



Test Circuit for Supply Current



Test Circuit for Ripple Rejection

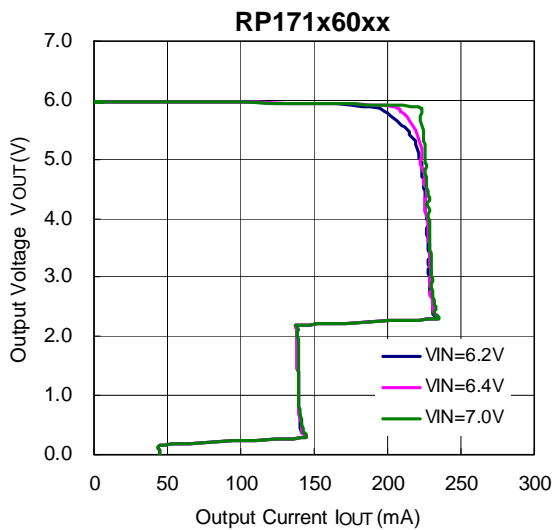
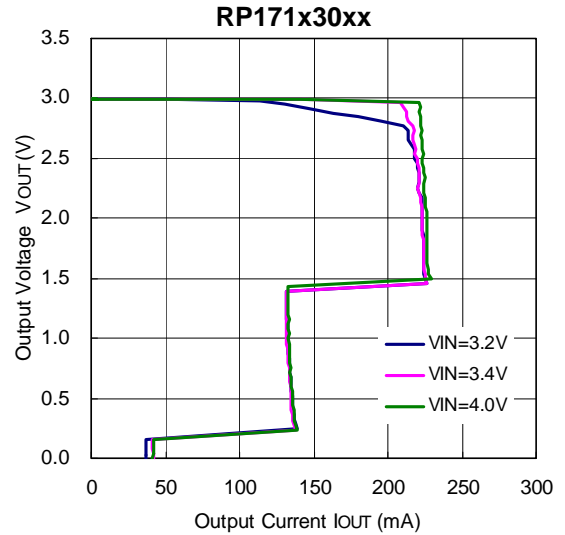
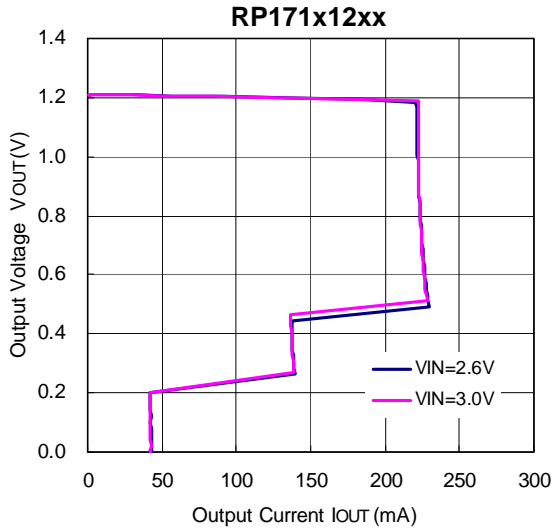


Test Circuit for Load Transient Response

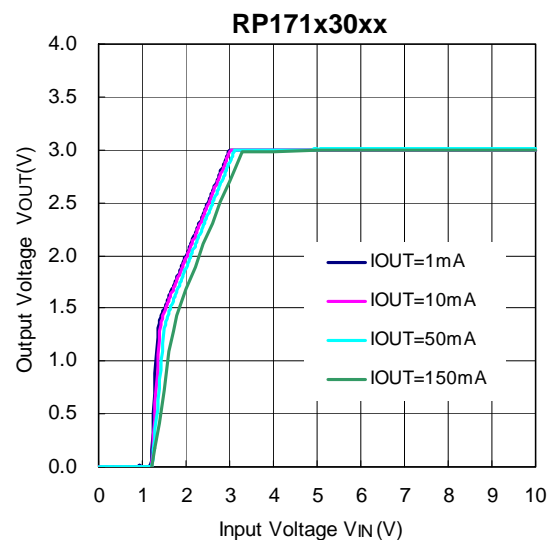
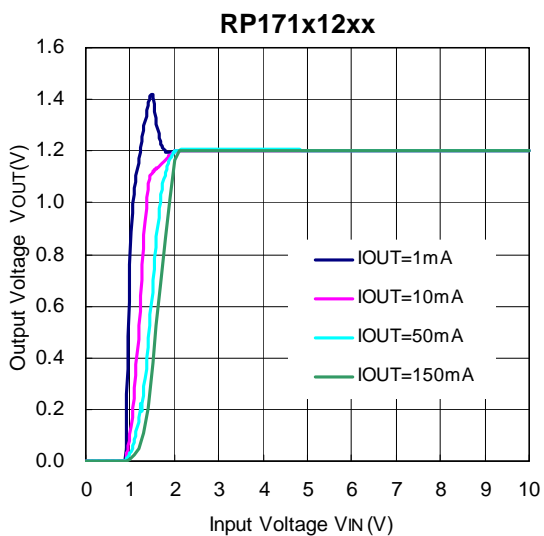
TYPICAL CHARACTERISTICS

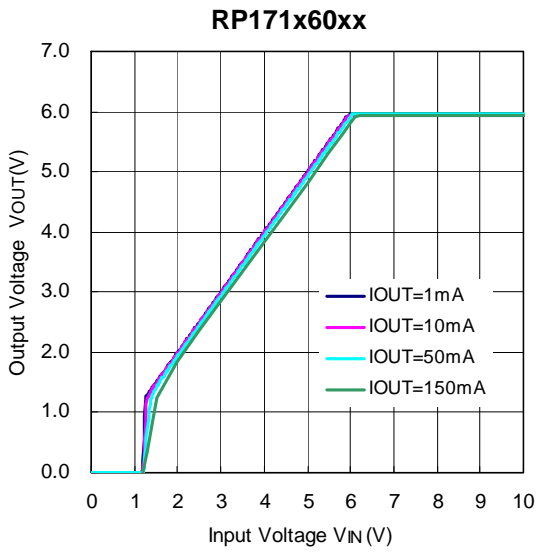
Note: Typical Characteristics are intended to be used as reference data; they are not guaranteed.

1) Output voltage vs. Output Current (Ta = 25°C)

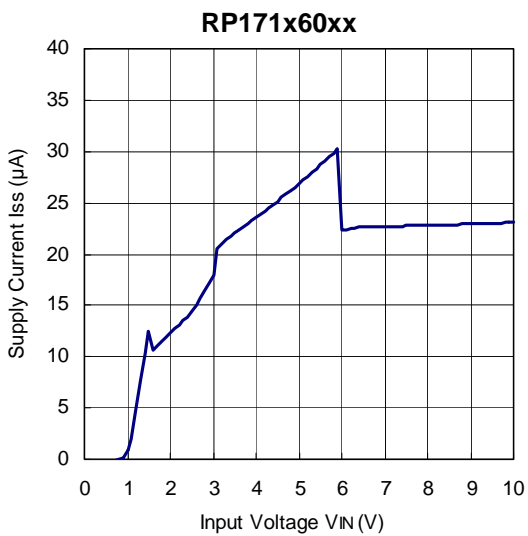
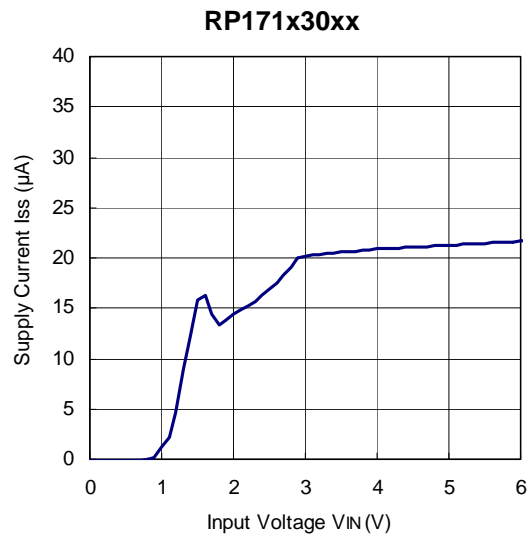
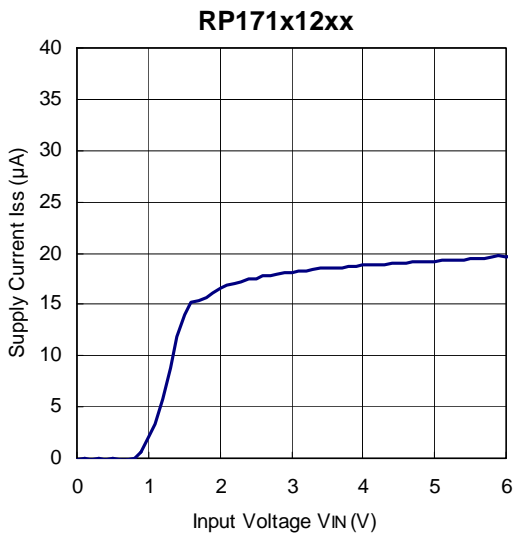


2) Output Voltage vs. Input Voltage (Ta = 25°C)

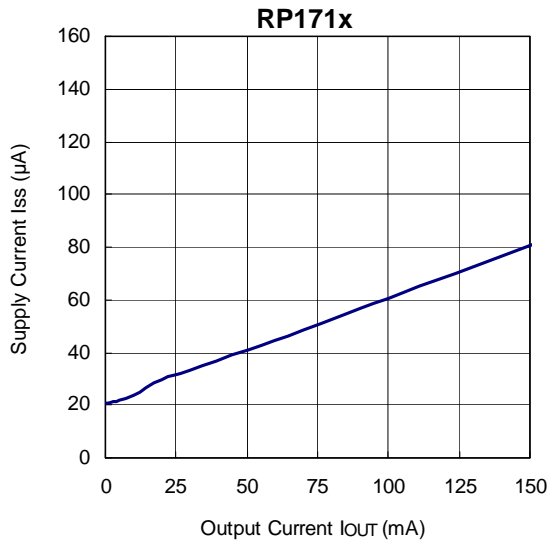




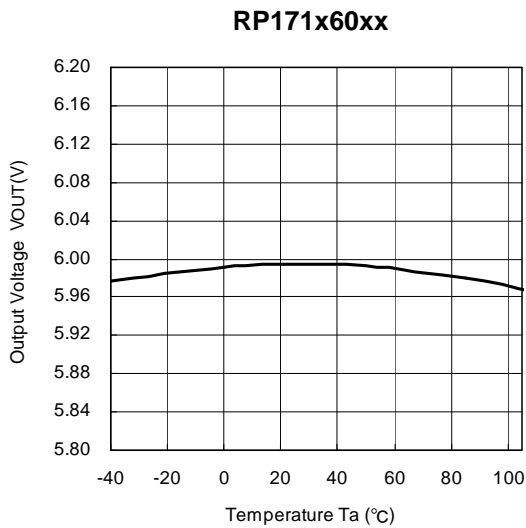
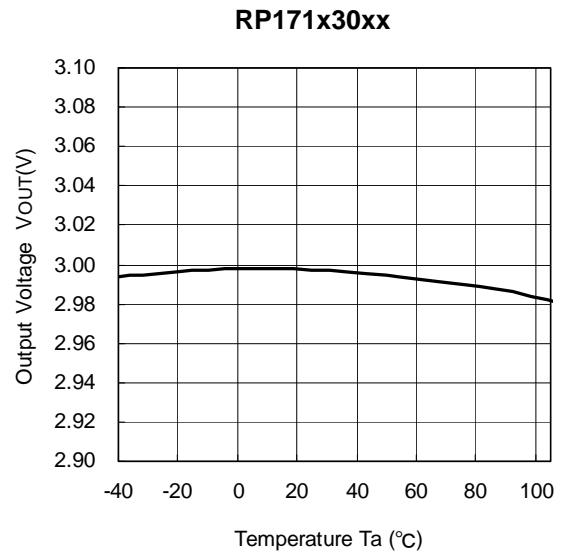
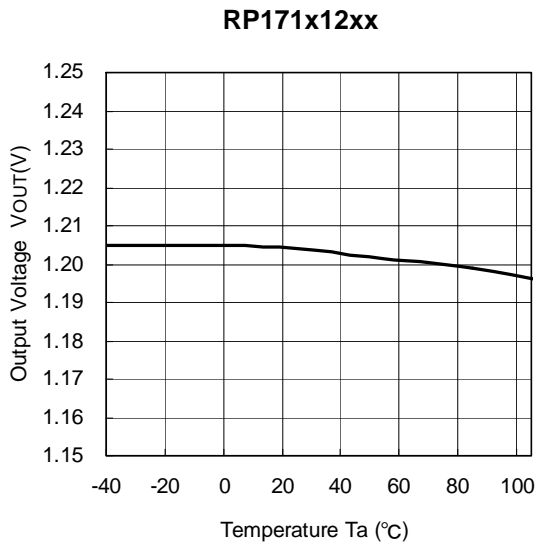
3) Supply Current vs. Input Voltage ($T_a = 25^\circ\text{C}$)



4) Supply Current vs. Output Current (Ta = 25°C)

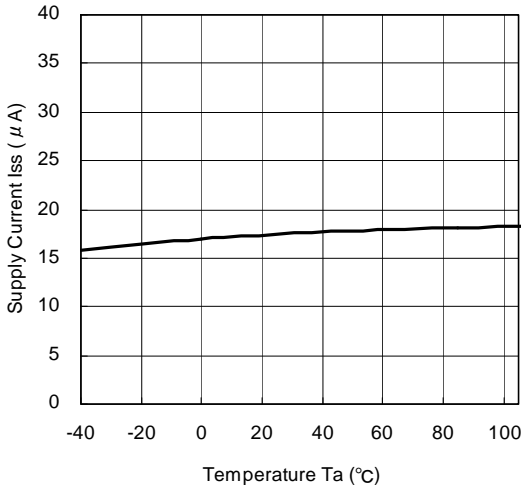


5) Output Voltage vs. Temperature

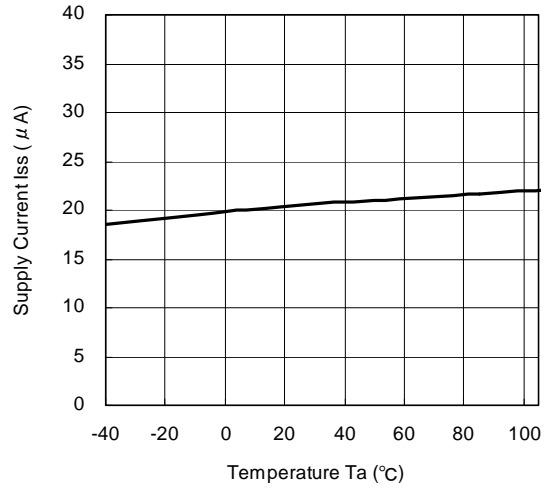


6) Supply Current vs. Temperature

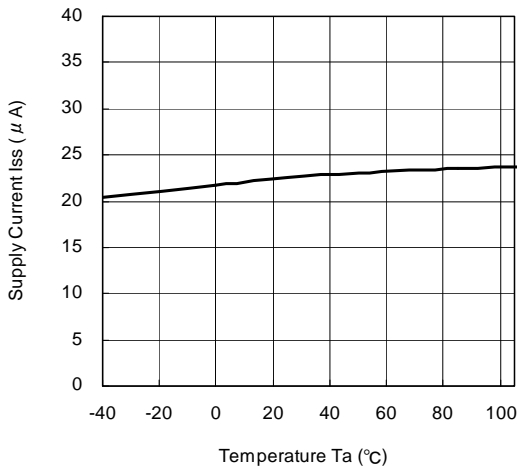
RP171x12xx



RP171x30xx

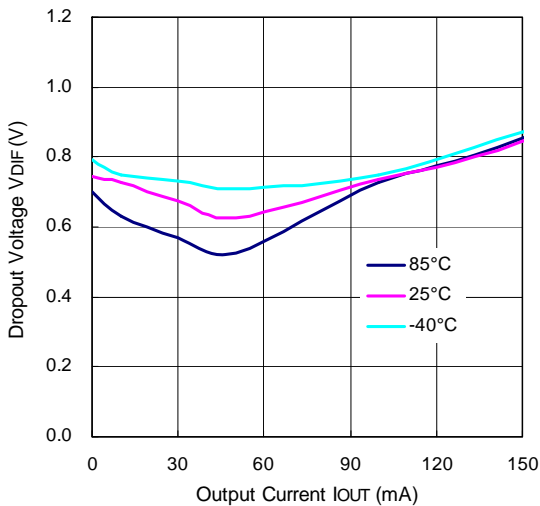


RP171x60xx

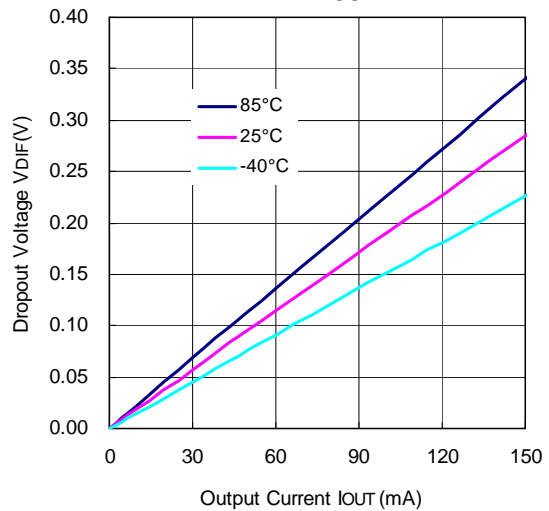


7) Dropout Voltage vs. Output Current

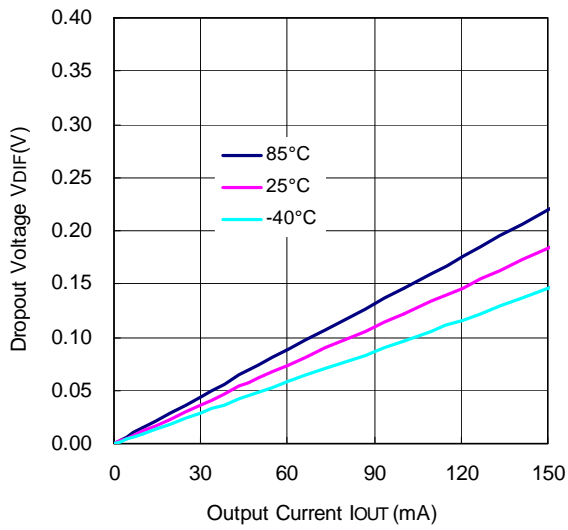
RP171x12xx



RP171x30xx

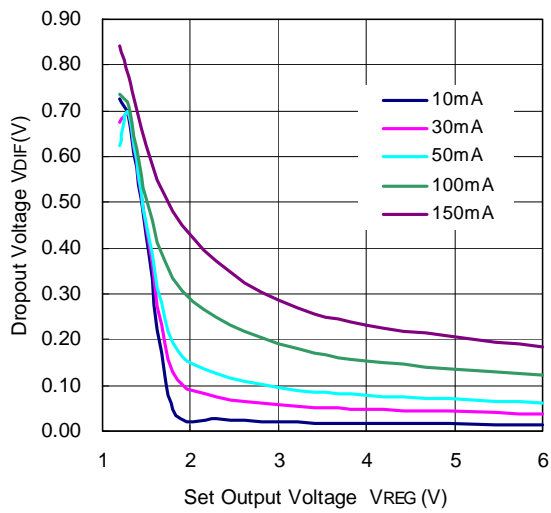


RP171x60xx



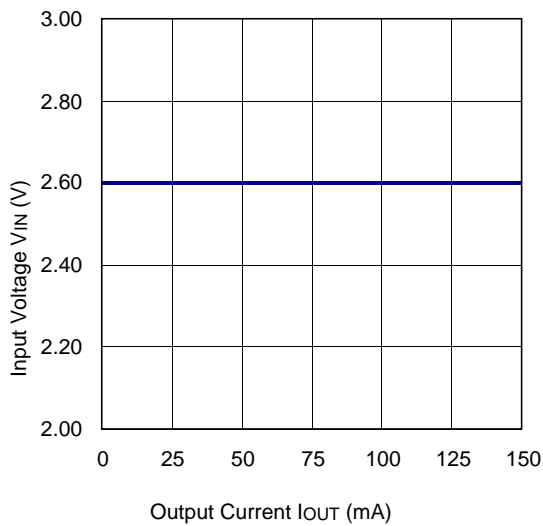
8) Dropout Voltage vs. Set Output Voltage (Ta = 25°C)

RP171x



9) Minimum Operating Voltage

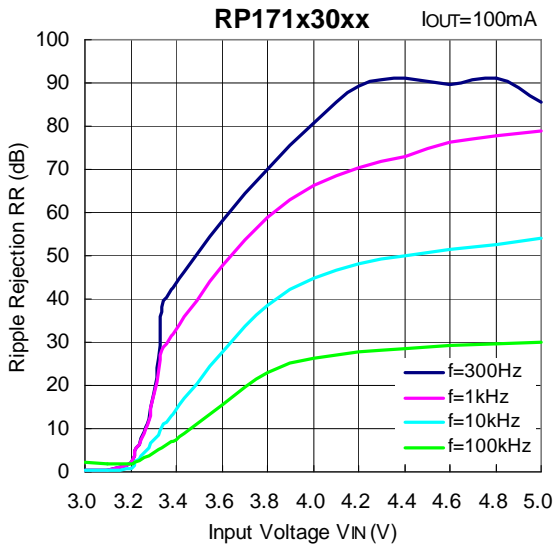
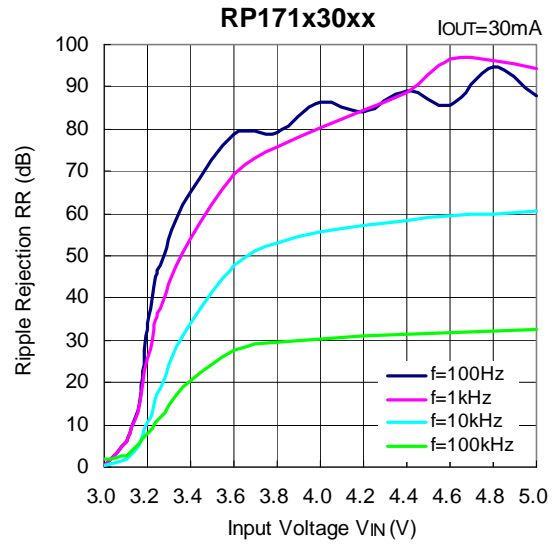
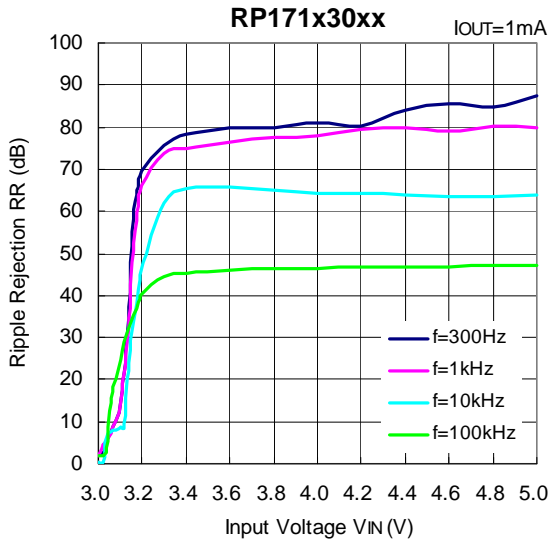
RP171x12xx



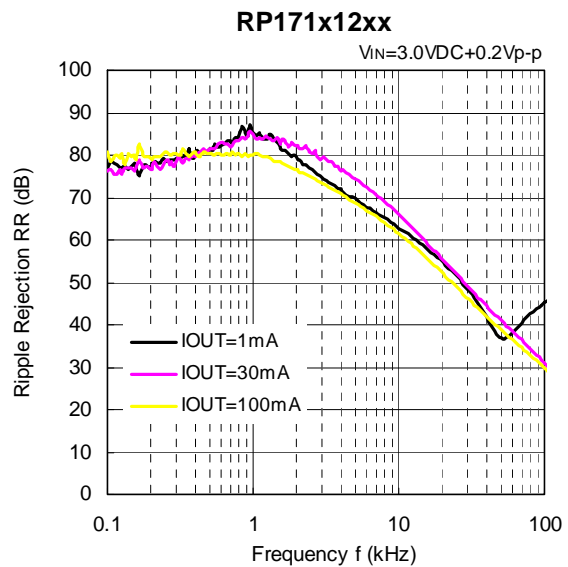
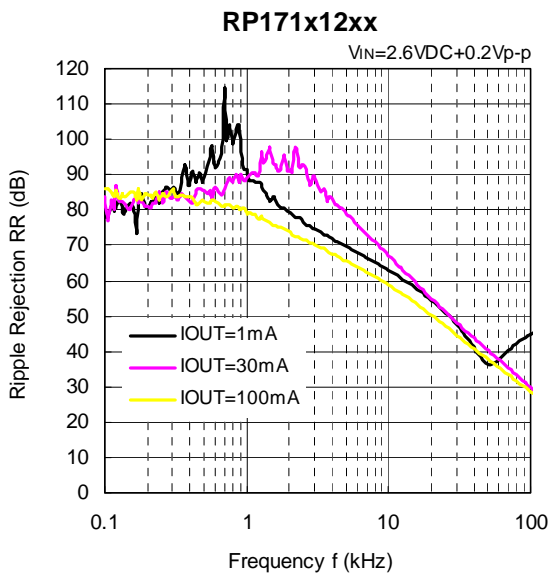
RP171N

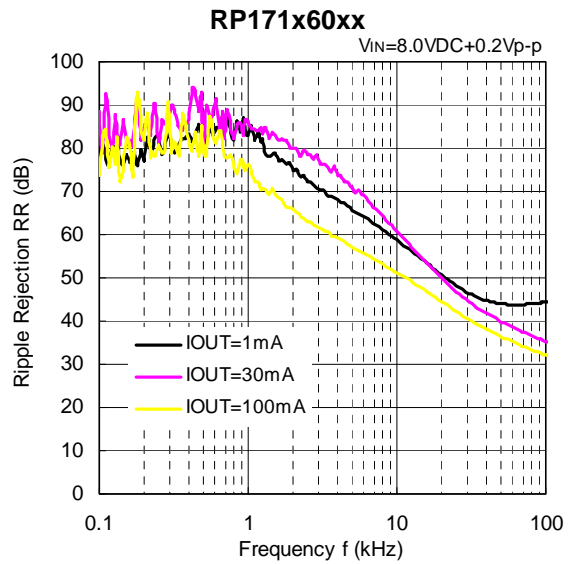
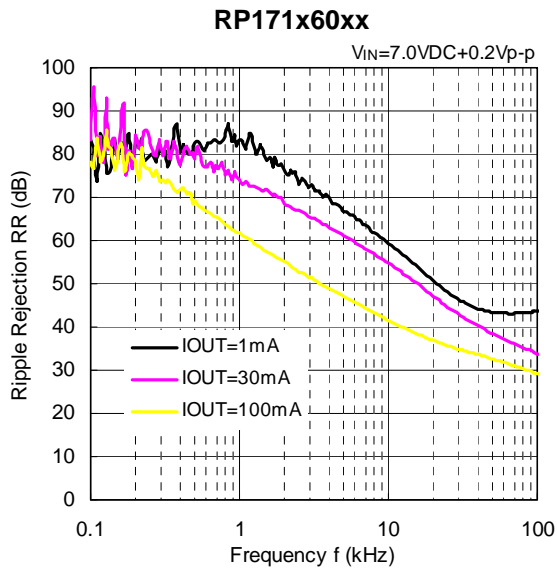
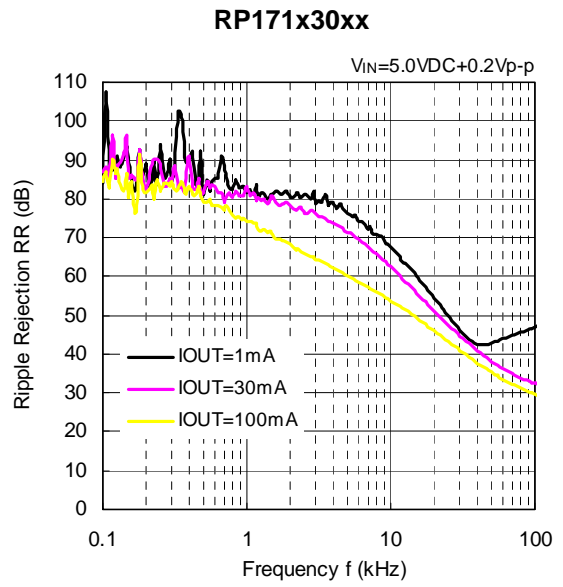
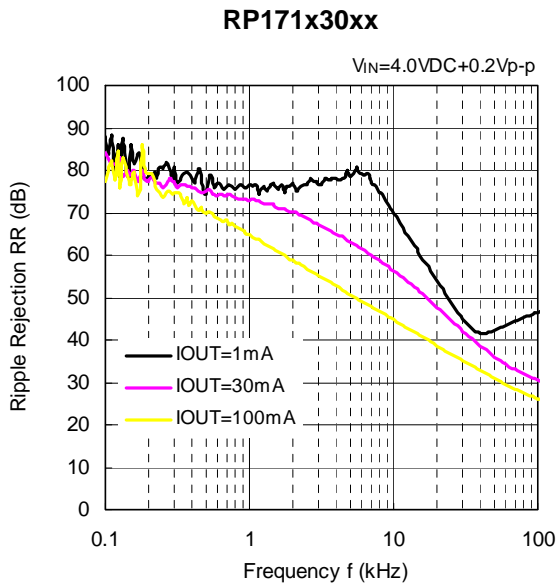
NO. EC-245-150210

10) Ripple Rejection vs. Input Bias Voltage (C1 = none, C2 = Ceramic 1.0 μ F, Ripple = 0.2 Vp-p, Ta = 25°C)

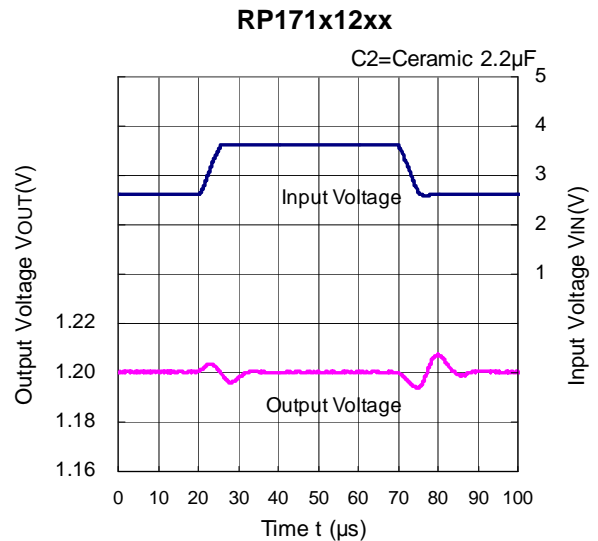
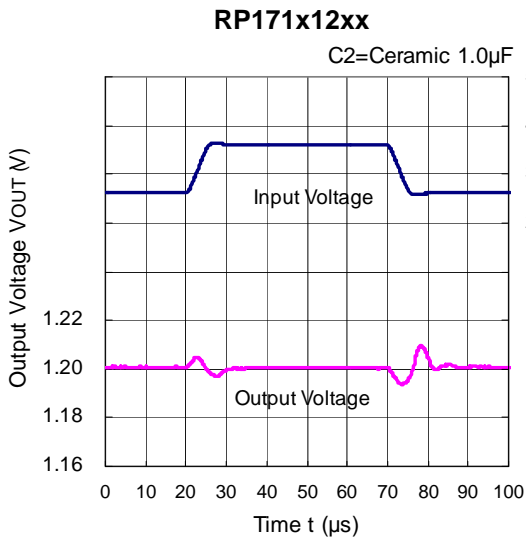


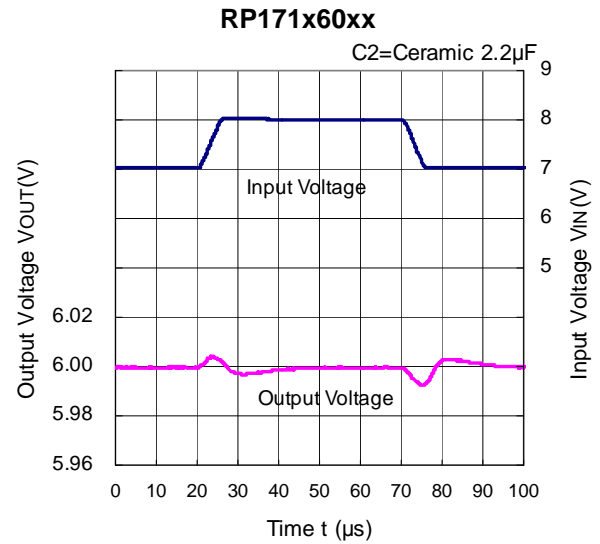
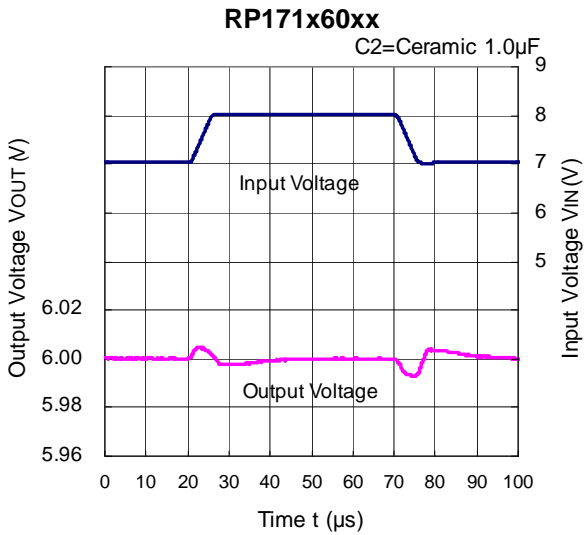
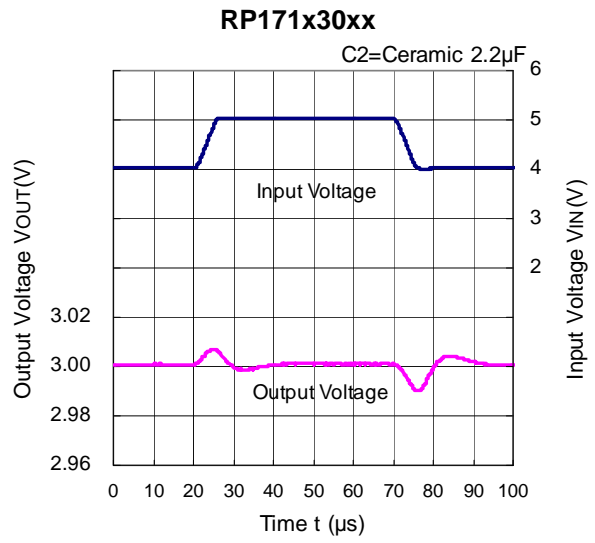
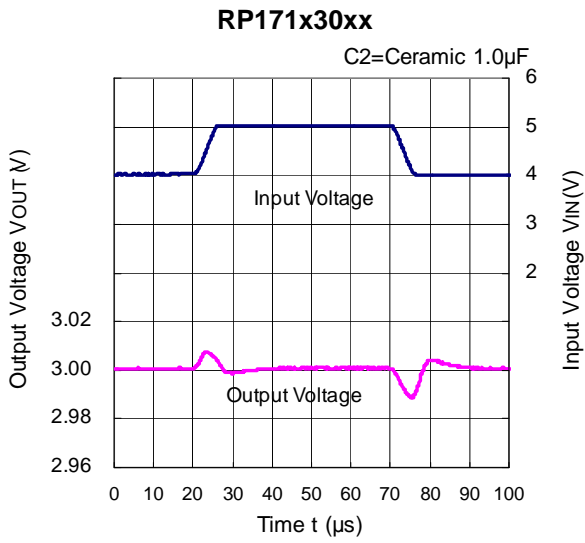
11) Ripple Rejection vs. Frequency (C1 = none, C2 = Ceramic 1.0 μ F, Ta = 25°C)



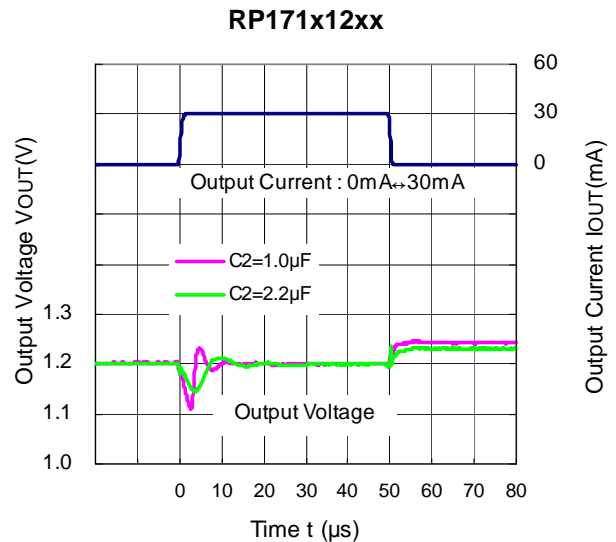
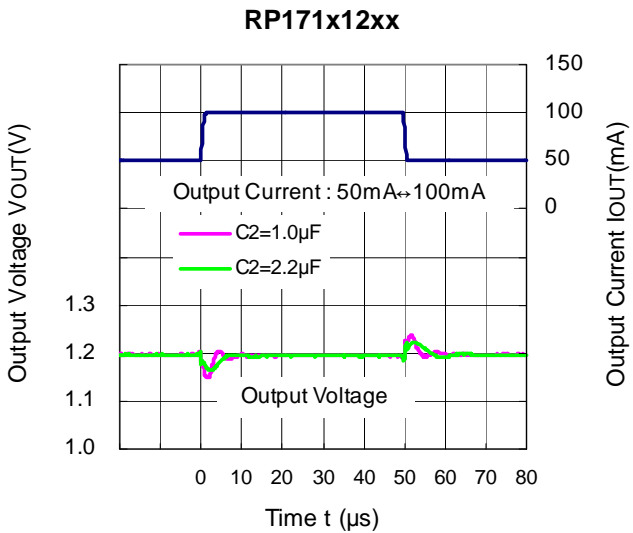


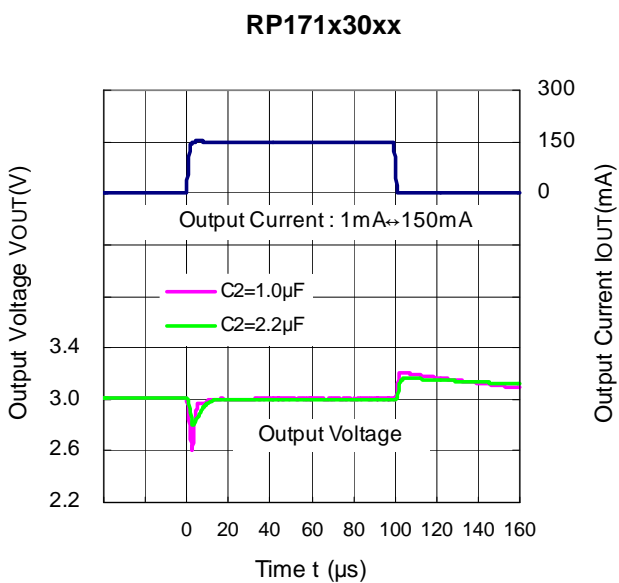
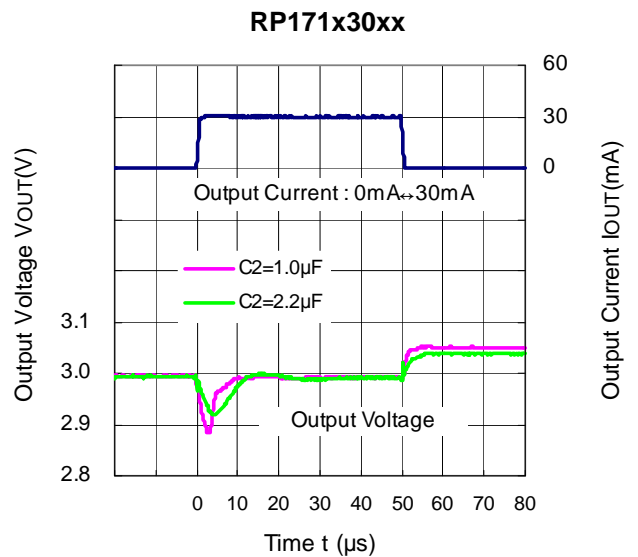
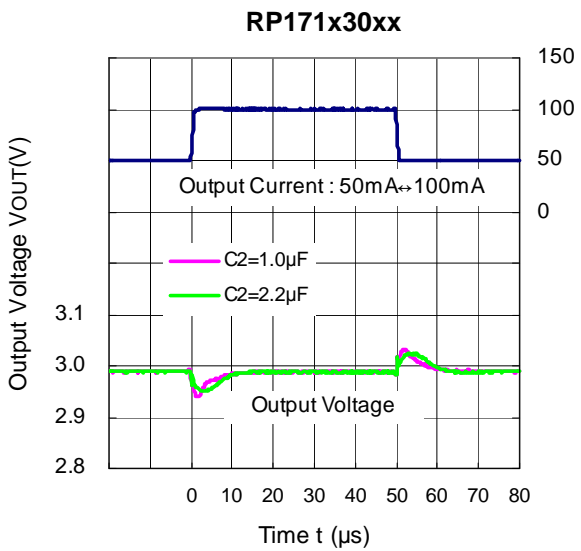
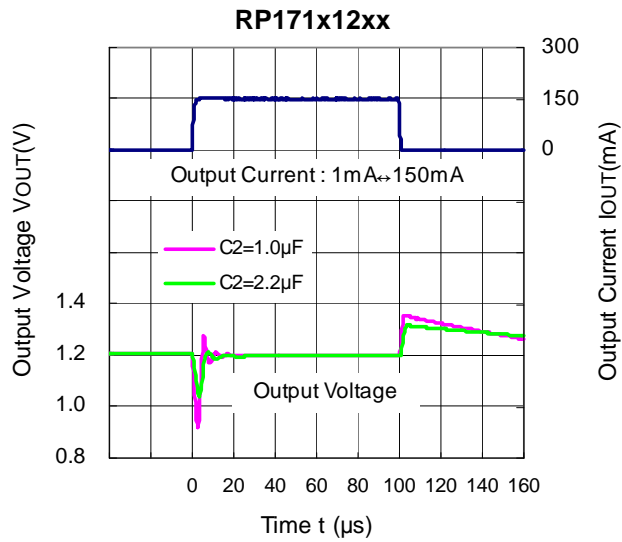
12) Input Transient Response (C1 = none, IOUT = 30 mA, tr = tf = 5μs, Ta = 25°C)





13) Load Transient Response (C1 = Ceramic 1.0 μ F, $t_r = t_f = 500$ ns, $T_a = 25^\circ$ C)

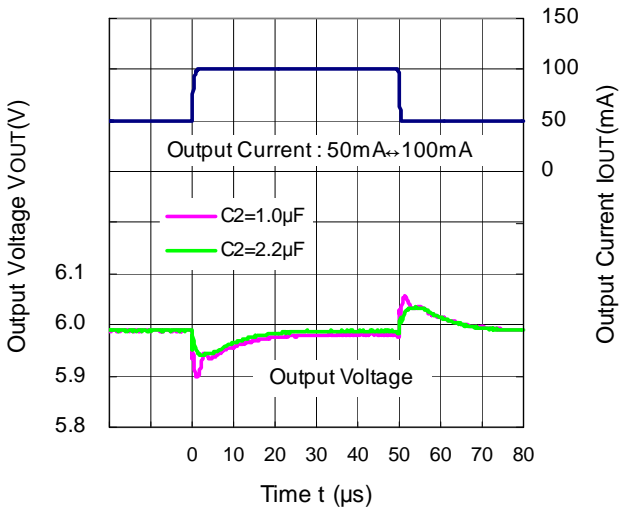




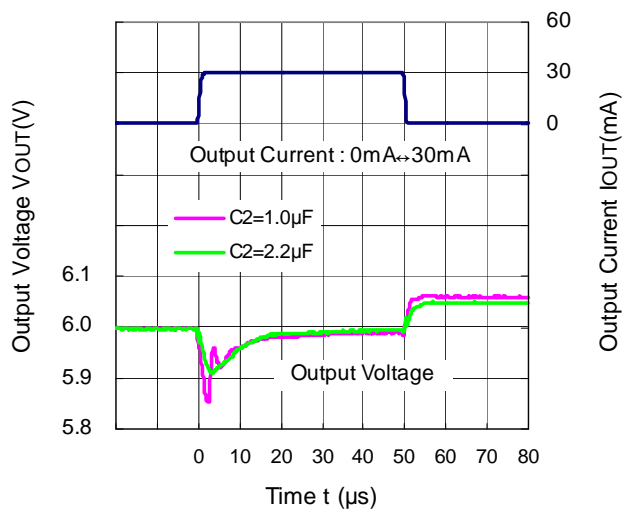
RP171N

NO. EC-245-150210

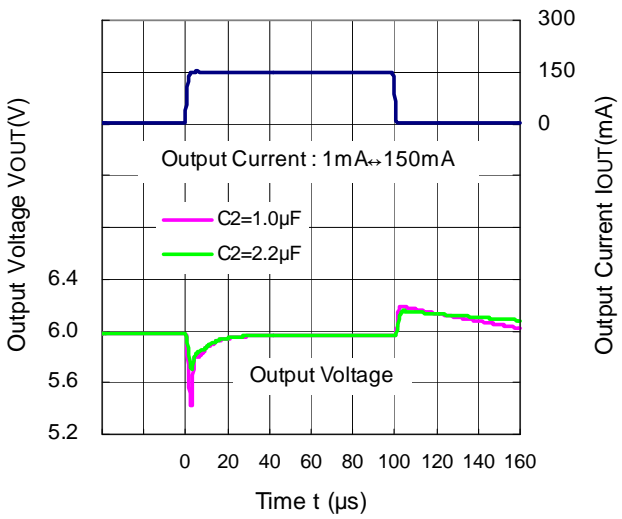
RP171x60xx



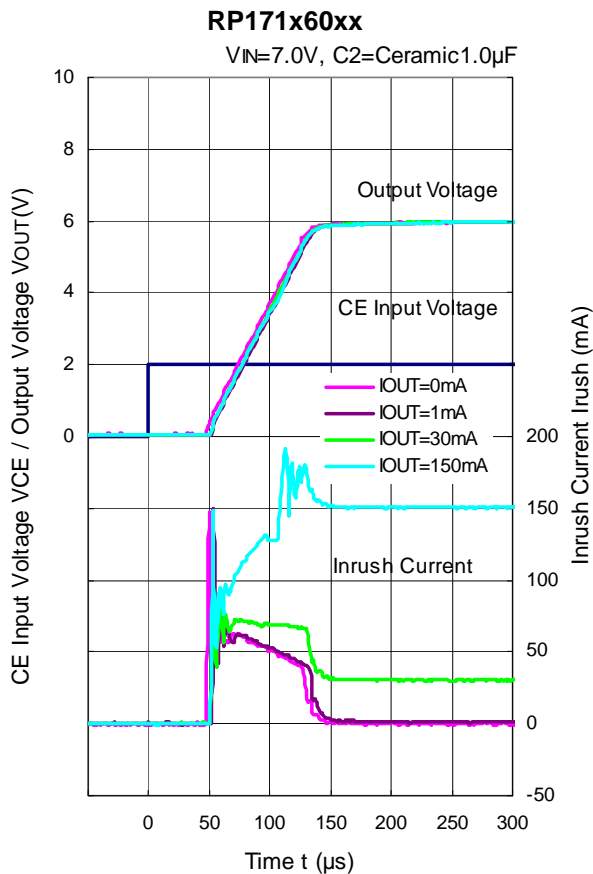
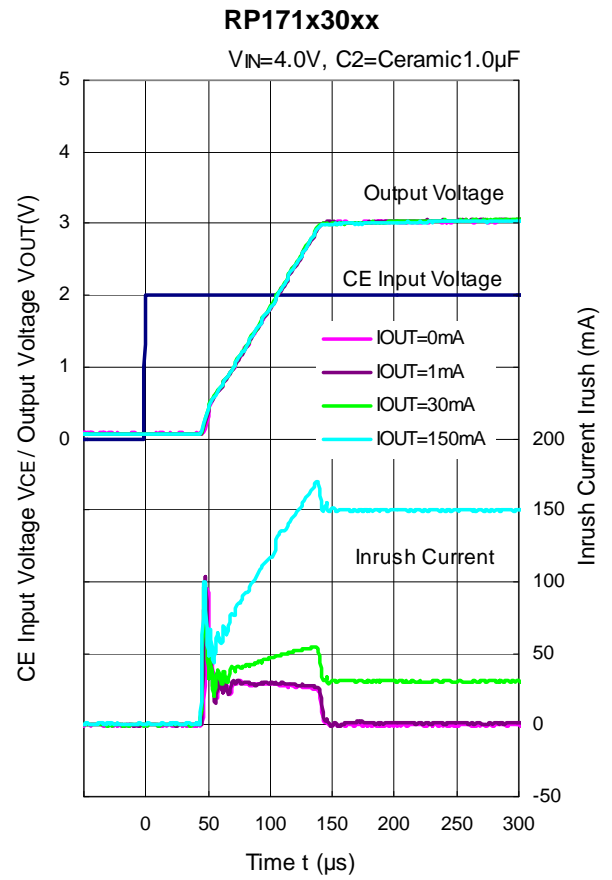
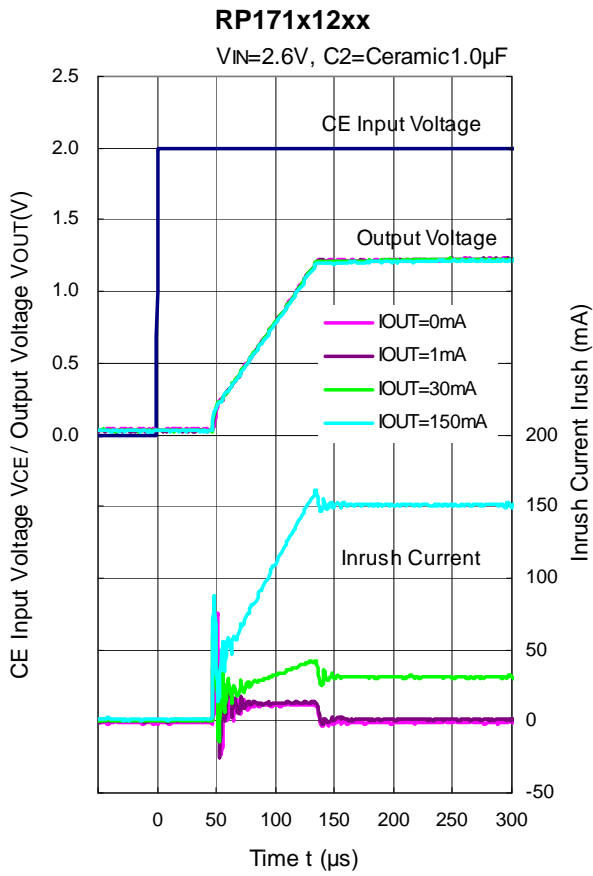
RP171x60xx



RP171x60xx



14) Turn On Speed with CE pin (C1 = Ceramic 1.0 μ F, Ta = 25°C)

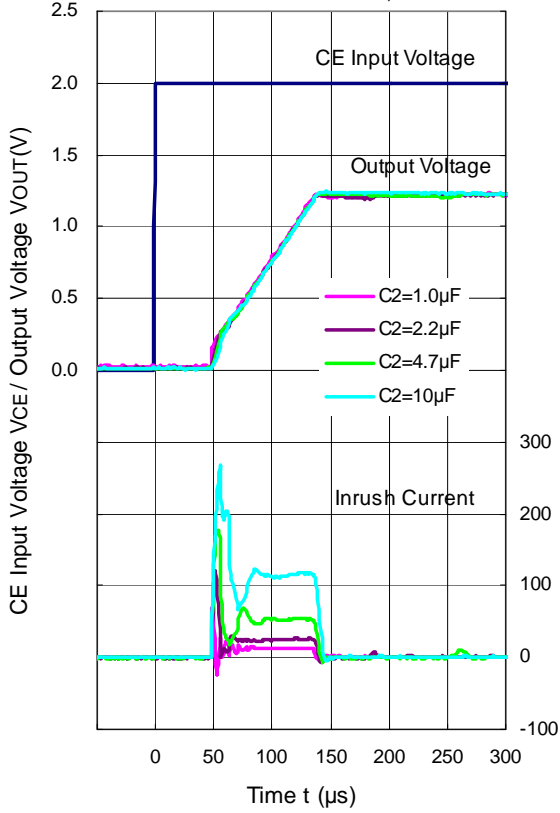


RP171N

NO. EC-245-150210

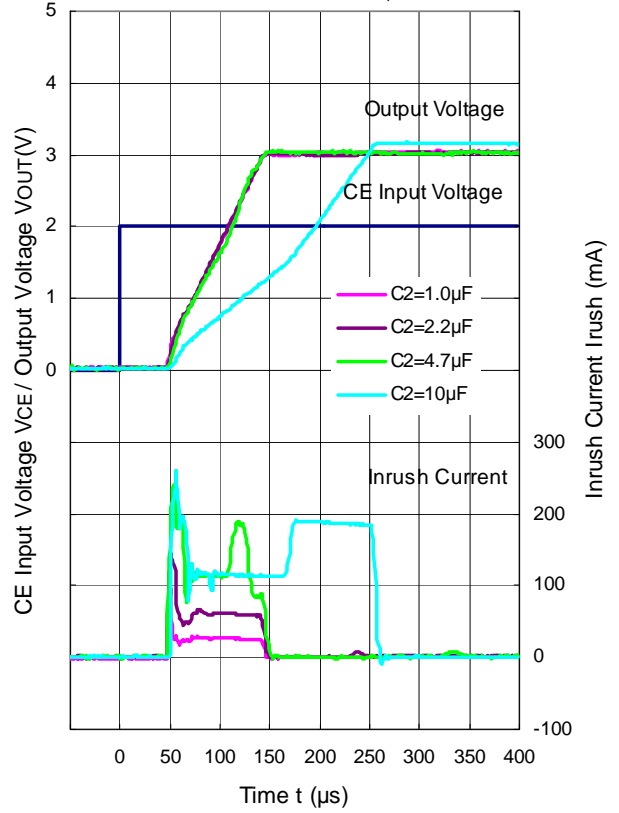
RP171x12xx

$V_{IN}=2.6V, I_{OUT}=1mA$



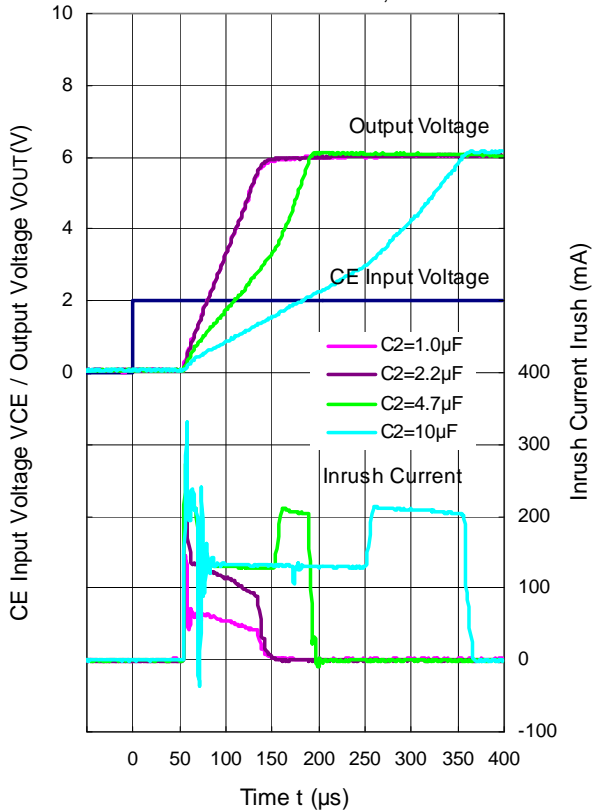
RP171x30xx

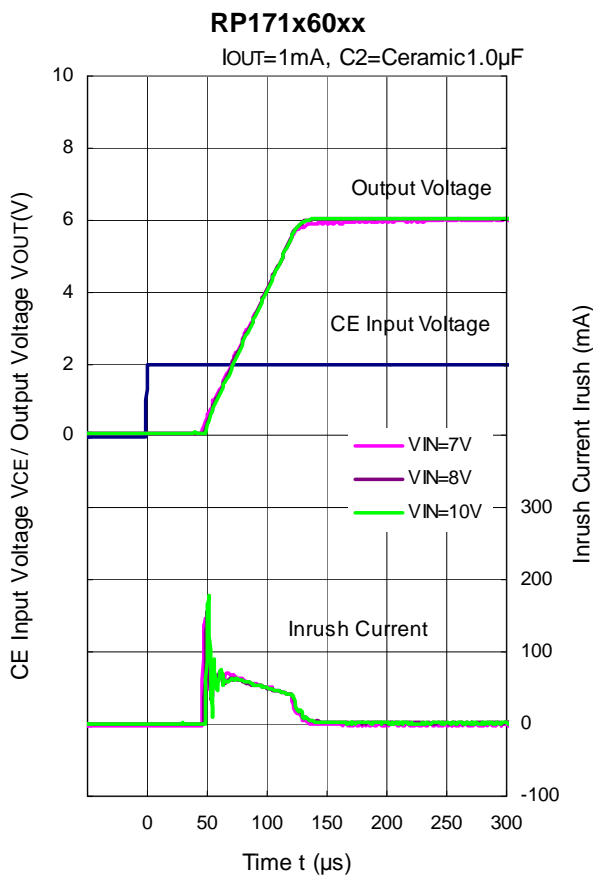
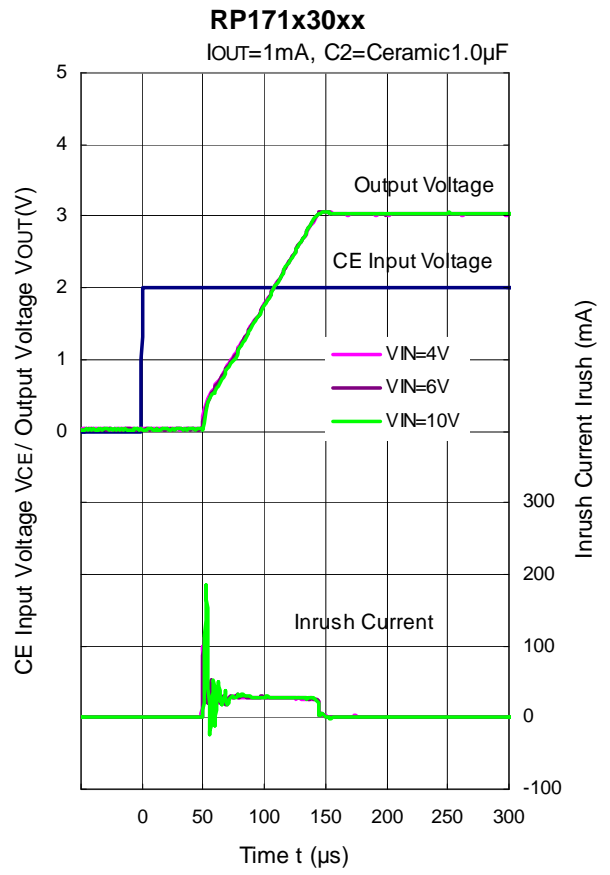
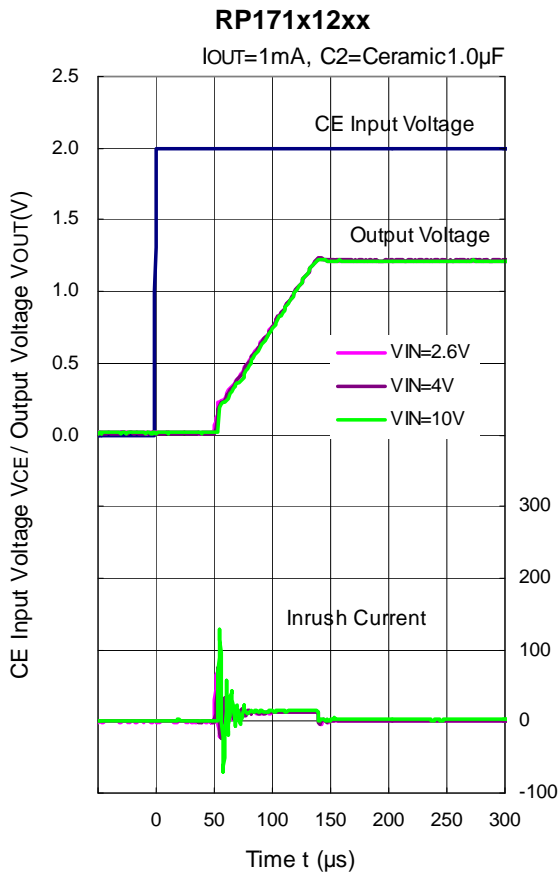
$V_{IN}=4.0V, I_{OUT}=1mA$



RP171x60xx

$V_{IN}=7.0V, I_{OUT}=1mA$

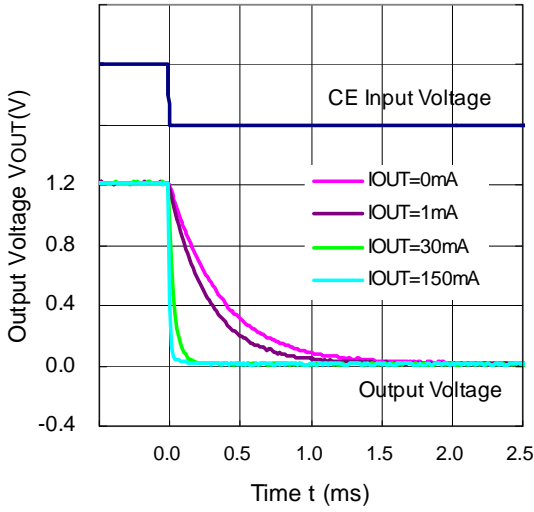




15) Turn Off Speed with CE pin (RP171xxxxD) (C1 = C2 = Ceramic 1.0 μ F, Ta = 25°C)

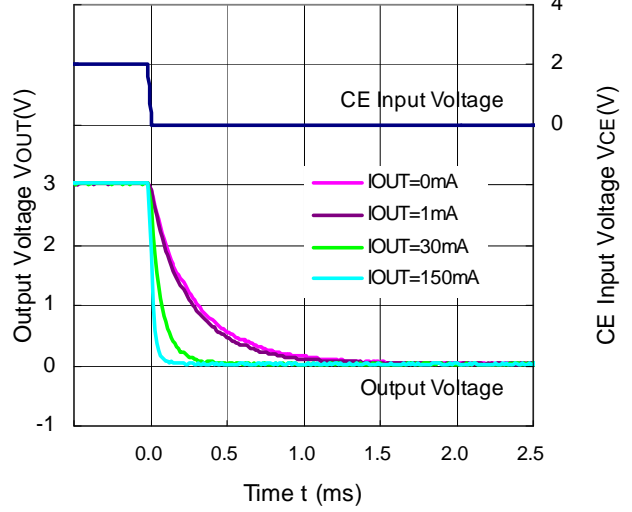
RP171x121D

V_{IN}=2.6V



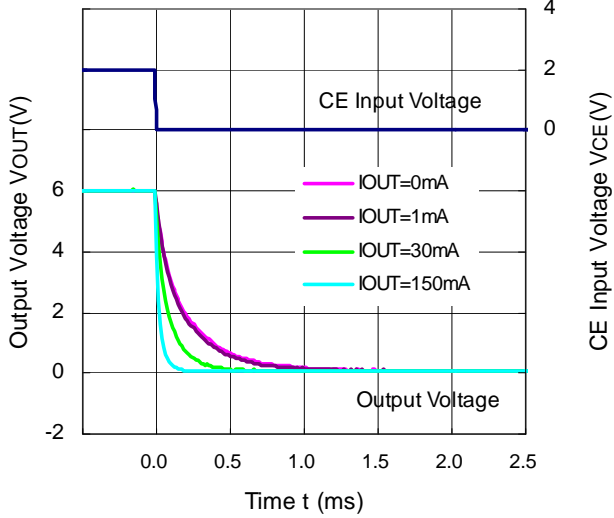
RP171x301D

V_{IN}=4.0V



RP171x601D

V_{IN}=7.0V



EQUIVALENT SERIES RESISTANCE (ESR) vs. OUTPUT CURRENT (I_{OUT})

Ceramic type output capacitor is recommended for the RP171x; however, the other output capacitors with low ESR also can be used. The relations between I_{OUT} (Output Current) and ESR of an output capacitor are shown below. The conditions when the white noise level is under 40 μV (Avg.) are marked as the hatched area in the graph.

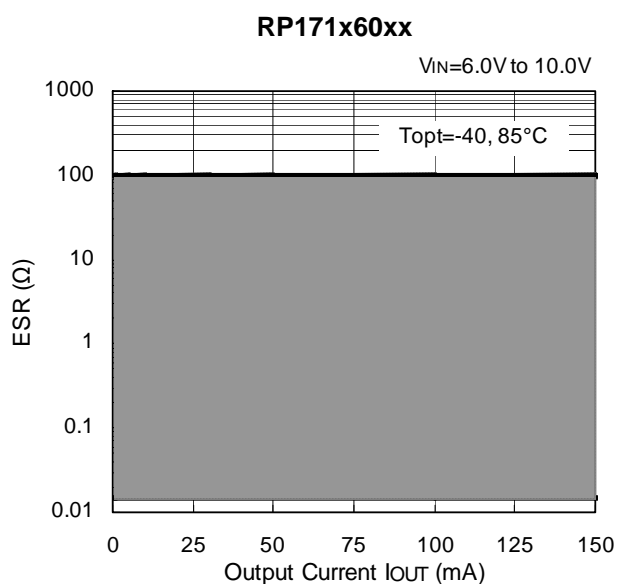
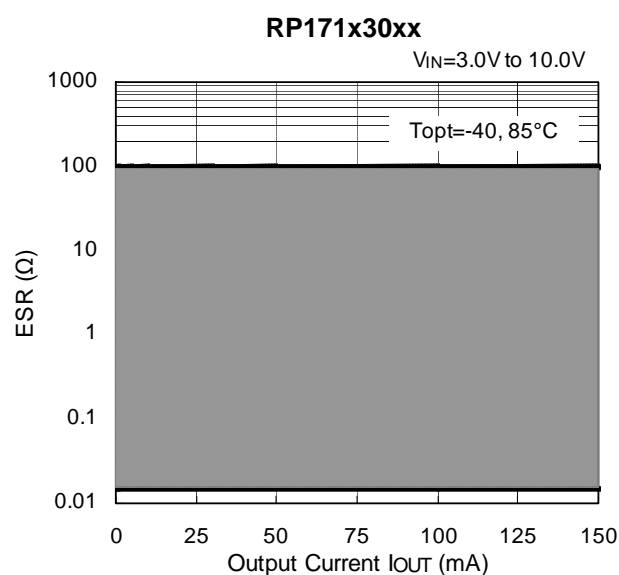
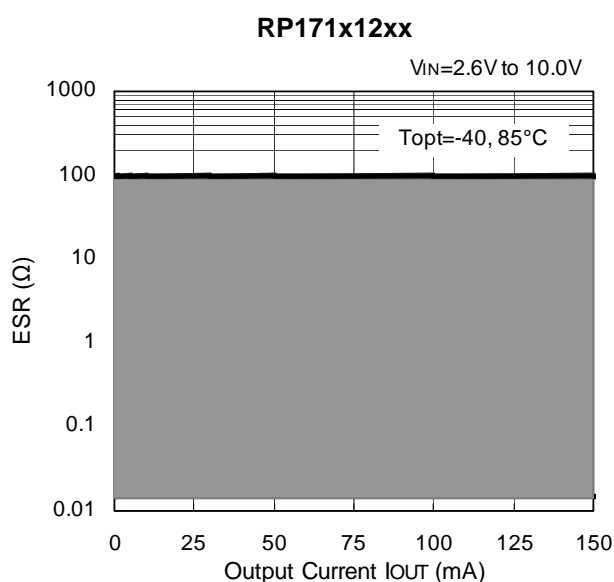
Measurement Conditions

Noise Frequency Band: 10 Hz to 2 MHz

Measurement Temperature: -40°C to 85°C

Hatched area: Noise level below 40 μV (Avg.).

C1, C2: Ceramic 1.0 μF (Murata, GRM155B31A105KE)





1. The products and the product specifications described in this document are subject to change or discontinuation of production without notice for reasons such as improvement. Therefore, before deciding to use the products, please refer to Ricoh sales representatives for the latest information thereon.
2. The materials in this document may not be copied or otherwise reproduced in whole or in part without prior written consent of Ricoh.
3. Please be sure to take any necessary formalities under relevant laws or regulations before exporting or otherwise taking out of your country the products or the technical information described herein.
4. The technical information described in this document shows typical characteristics of and example application circuits for the products. The release of such information is not to be construed as a warranty of or a grant of license under Ricoh's or any third party's intellectual property rights or any other rights.
5. The products in this document are designed for automotive applications. However, when using the products for automotive applications, please make sure to contact Ricoh sales representative in advance due to confirming the quality level.
6. We are making our continuous effort to improve the quality and reliability of our products, but semiconductor products are likely to fail with certain probability. In order to prevent any injury to persons or damages to property resulting from such failure, customers should be careful enough to incorporate safety measures in their design, such as redundancy feature, fire containment feature and fail-safe feature. We do not assume any liability or responsibility for any loss or damage arising from misuse or inappropriate use of the products.
7. Anti-radiation design is not implemented in the products described in this document.
8. The X-ray exposure can influence functions and characteristics of the products. Confirm the product functions and characteristics in the evaluation stage.
9. WLCSP products should be used in light shielded environments. The light exposure can influence functions and characteristics of the products under operation or storage.
10. There can be variation in the marking when different AOI (Automated Optical Inspection) equipment is used. In the case of recognizing the marking characteristic with AOI, please contact Ricoh sales or our distributor before attempting to use AOI.
11. Please contact Ricoh sales representatives should you have any questions or comments concerning the products or the technical information.



Ricoh is committed to reducing the environmental loading materials in electrical devices with a view to contributing to the protection of human health and the environment.

Ricoh has been providing RoHS compliant products since April 1, 2006 and Halogen-free products since April 1, 2012.

RICOH RICOH ELECTRONIC DEVICES CO., LTD.

<http://www.e-devices.ricoh.co.jp/en/>

Sales & Support Offices

RICOH ELECTRONIC DEVICES CO., LTD.

Higashi-Shinagawa Office (International Sales)
3-32-3, Higashi-Shinagawa, Shinagawa-ku, Tokyo 140-8655, Japan
Phone: +81-3-5479-2857 Fax: +81-3-5479-0502

RICOH EUROPE (NETHERLANDS) B.V.

Semiconductor Support Centre
Prof. W.H. Keesomlaan 1, 1183 DJ Amstelveen, The Netherlands
Phone: +31-20-5474-309

RICOH INTERNATIONAL B.V. - German Branch

Semiconductor Sales and Support Centre
Oberrather Strasse 6, 40472 Düsseldorf, Germany
Phone: +49-211-6546-0

RICOH ELECTRONIC DEVICES KOREA CO., LTD.

3F, Haesung Bldg, 504, Teheran-ro, Gangnam-gu, Seoul, 135-725, Korea
Phone: +82-2-2135-5700 Fax: +82-2-2051-5713

RICOH ELECTRONIC DEVICES SHANGHAI CO., LTD.

Room 403, No.2 Building, No.690 Bilbo Road, Pu Dong New District, Shanghai 201203, People's Republic of China
Phone: +86-21-5027-3200 Fax: +86-21-5027-3299

RICOH ELECTRONIC DEVICES CO., LTD.

Taipei office
Room 109, 10F-1, No.51, Hengyang Rd., Taipei City, Taiwan (R.O.C.)
Phone: +886-2-2313-1621/1622 Fax: +886-2-2313-1623